

KFV

Locks

Metal

Window systems

Door systems

Comfort systems



Reprinting or reproduction of catalogue pages is not permitted without our written authorisation.

All article descriptions and technical specifications correspond to the state of our production on the date that this catalogue was published.

We reserve the right to make changes.

We assume no liability for printing errors and other errors.

April 2023



Security for your customers

"The Protection Company" – a statement that very much reflects our philosophy, defines our standards and expresses our commitment.

Fabricators and producers with high standards for security have depended on KFV for many years. Our products are used throughout the world.

And it is not just about locking doors. It is rather about giving people a feeling of safety and protection. In their own four walls. At events. And in the workplace. This is what we have in mind as we search today for the solutions of tomorrow.

As a company of the SIEGENIA Group, we analyse the requirements of the market together with our partner companies. We offer the highest level of support to our customers. And we find solutions that allow people to feel safe.

Rely on security. Rely on KFV.



General Information

Legend	6
Lock structure	7
Types of doors, groove formations	8
RH or LH orientation according to DIN 107	10
Classification key according to EN 12209	11
Requirement classes	12

Locks for tubular frame doors

Deadbolt projection 15 mm	14
28	14
48	17
88	19
without deadbolt	21
68	21
78	25
Deadbolt projection 20 mm	27
49	27
50	31
51	33
Deadbolt projection 25 mm	35
59	35
60	38
61	40
Swing bolt	42
35	42
Hook bolt	44
36	44
Steel doors	47
183	47
Hookbolt	49
1625	49
Hookbolt	51
1627	51
Hookbolt	53
1630	53

Striker plates

Striker plates for tubular frame locks	56
0129-03-24	56
25-27-3	56
130-03-24	57
0148-03-24	57
35-03-24	58
36-03-24	58
36-03-24 F	58
0625-92	59
0625-92 F	59
0627	59
0630	60
188	60

Accessories

Keys	62
900	62
901	62

Appendix

Instructions for use	64
Important production information regarding door locks	65



General Information

Legend



Skeleton key



prepared for profile cylinder



prepared for Swiss round cylinder



WC lock



Special locks

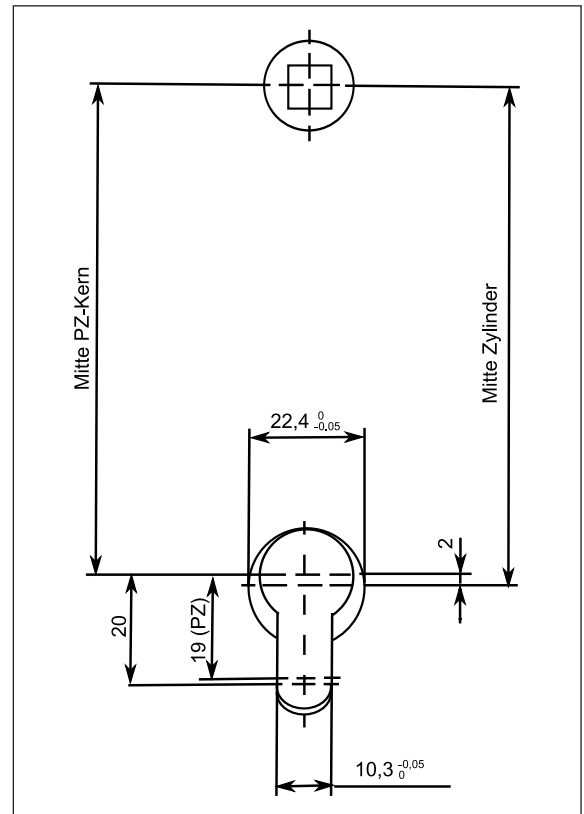
Swiss round cylinder

Device for Swiss round cylinder

(Swiss round cylinder, dimensions between centre line and radius of cam according to VSSB 20200, line 3)

The PZ dimension from the centre of the handle spindle to the centre of the Swiss round cylinder is always 2 mm larger than the dimension from the centre of the handle spindle to the centre of the profile cylinder core, e.g. 74 instead of 72 mm or 94 instead of 92 mm.

The catch of the cylinder may need to be shortened by approx. 1 mm. The Fliethomatic plates or roses are not mounted until after the cylinder has been mounted using the cylinder fixing screw.

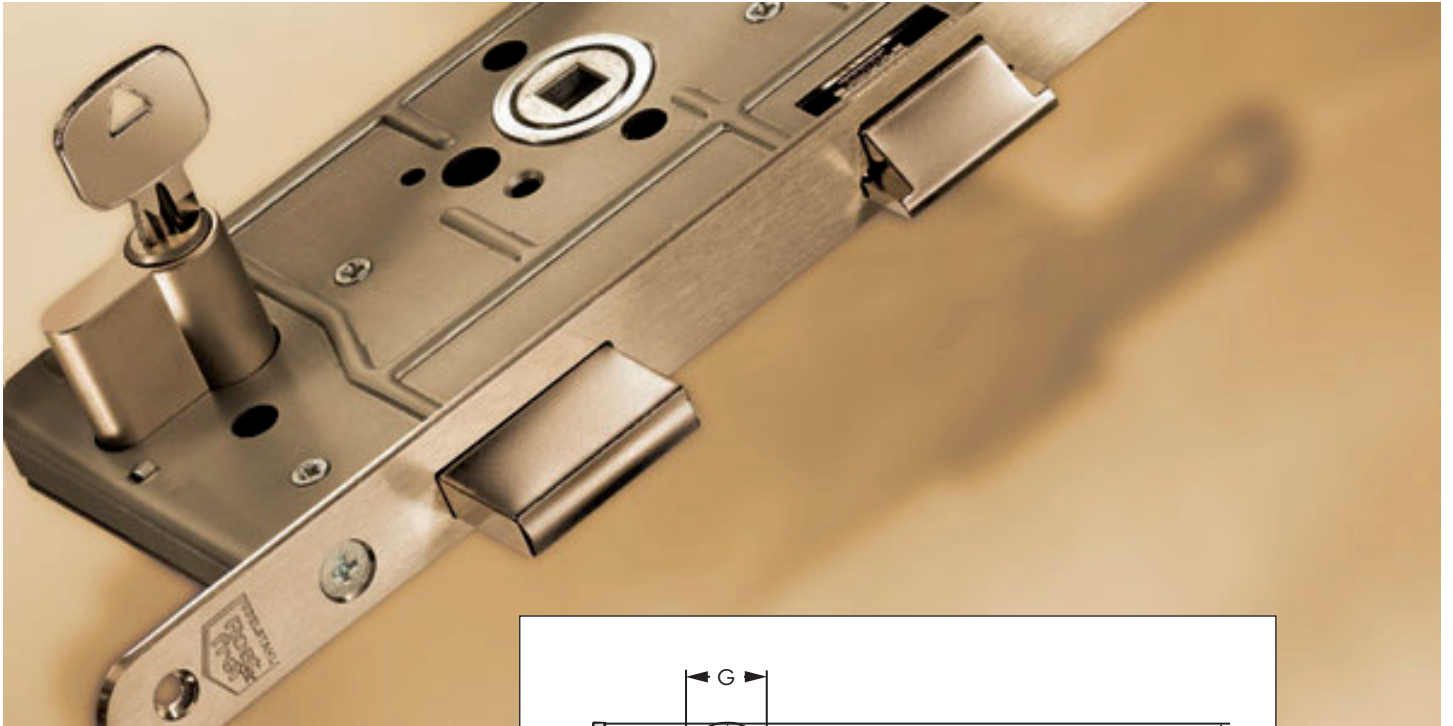


Swing door roller latch

Swing door roller latch

Adjustable, with roller of 11.6 mm Ø or 14 mm Ø.
Roller of 11.6 mm Ø - available with locks with 16 mm
Secondary sash width.

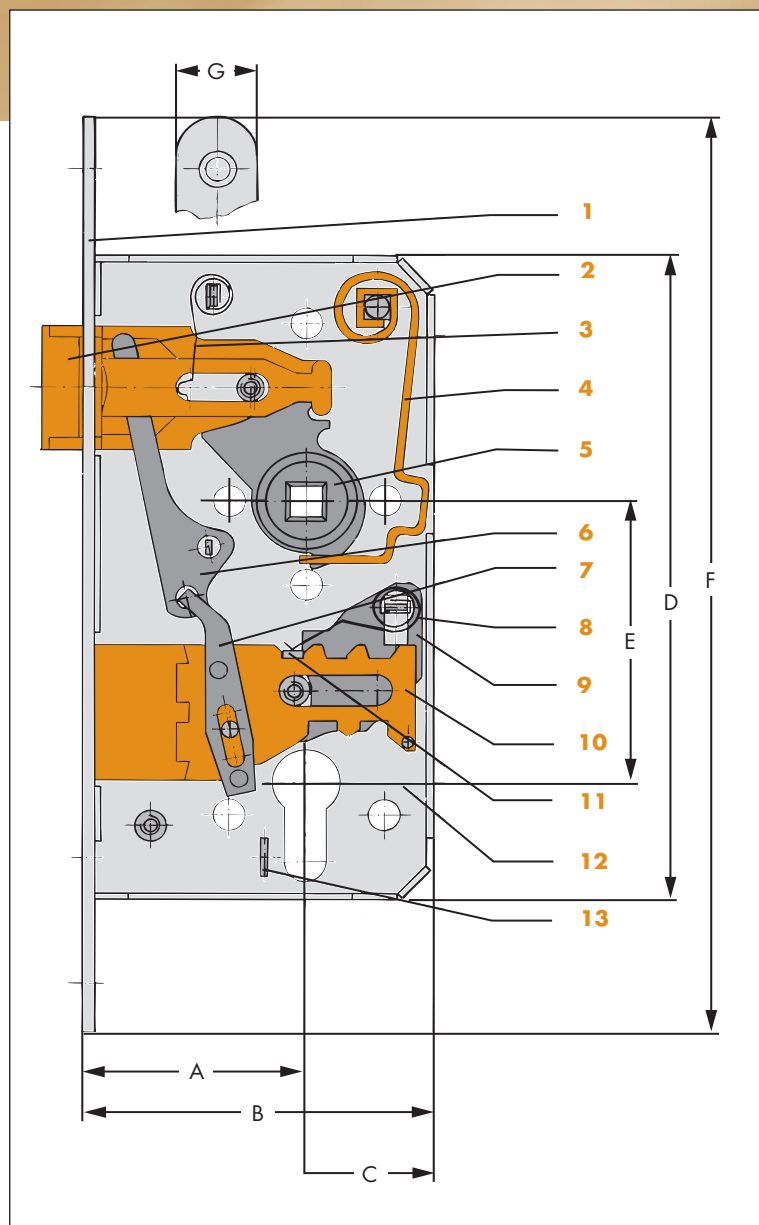




Terms and definitions

- 1** Faceplate
- 2** Latch
- 3** Latch bolt spring
- 4** Handle spring
- 5** Nut
- 6** Latch lever
- 7** Latch lever pressure piece
- 8** Tumbler spring
- 9** Tumbler
- 10** Deadbolt
- 11** Bolt stump
- 12** Lock case cover
- 13** Guide for cylinder fixing screw

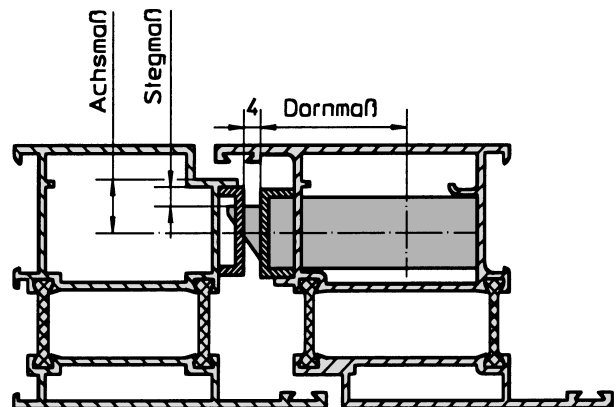
- A Backset
- B Case width
- C Rear backset
- D Case height
- E PZ dimension
- F Shield length
- G Secondary sash width





General Information

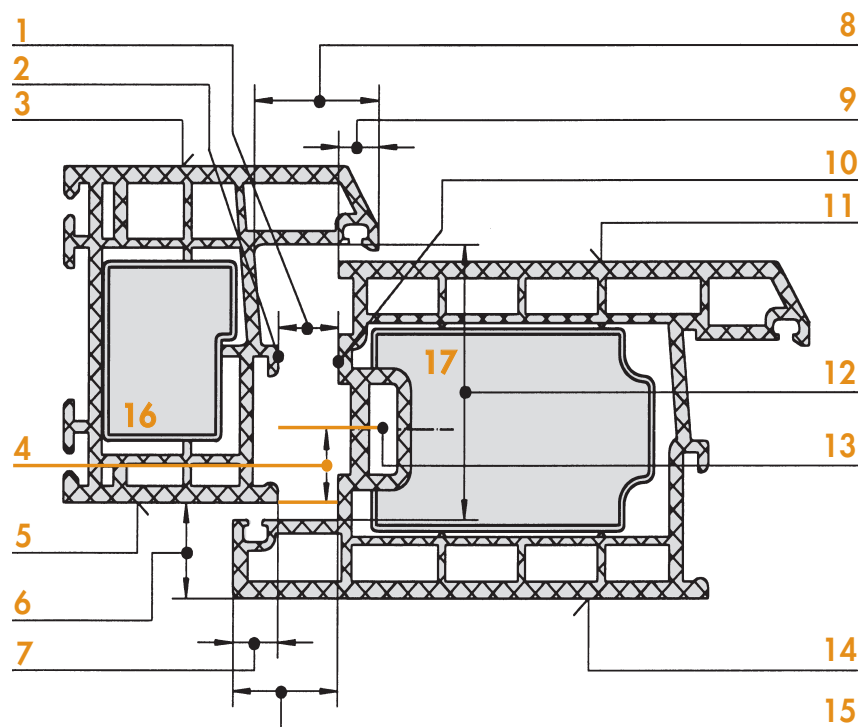
Types of doors, groove formations





Terms and definitions

- 1** Airgap (chamber dimensions)
- 2** Rear bead leg height
- 3** External visible surface of frame
- 4** Axis dimension
- 5** Internal visible surface of frame
- 6** Rebate height
- 7** Internal sash cover
- 8** Rebate width
- 9** External sash cover
- 10** Sash rebate
- 11** External visible surface of sash
- 12** Rebate depth
- 13** Hardware striker packer groove
- 14** Internal visible surface of sash
- 15** Rebate width
- 16** Cross sectional area of frame
- 17** Cross sectional area of sash



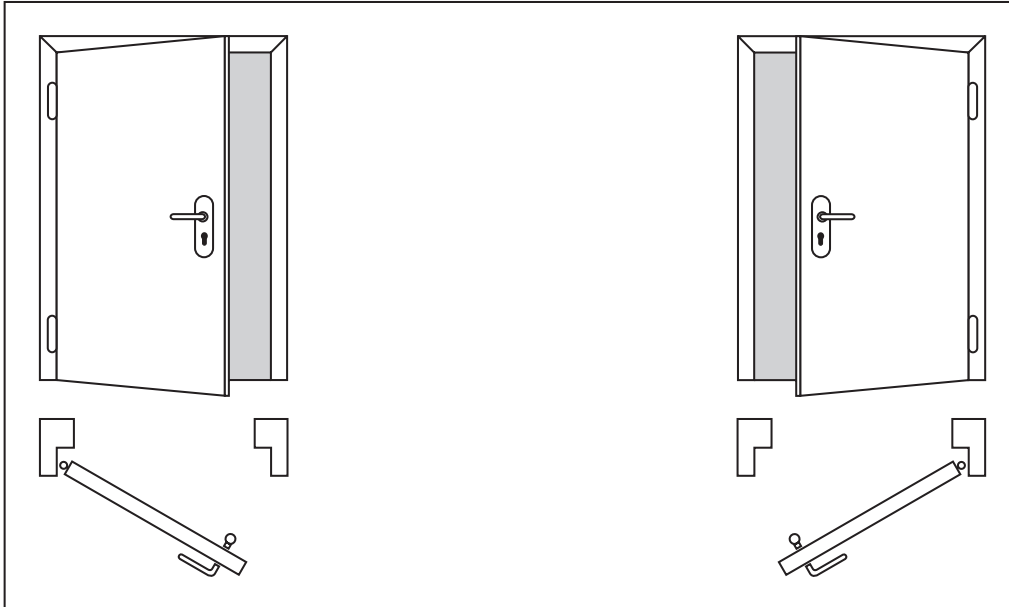


General Information

RH or LH orientation according to DIN 107

Single-sash doors

Determination of the direction of the door side on which the hinges are visible: visible seat of the door hinges right (DIN RH), visible seat of the hinges left (DIN LH).

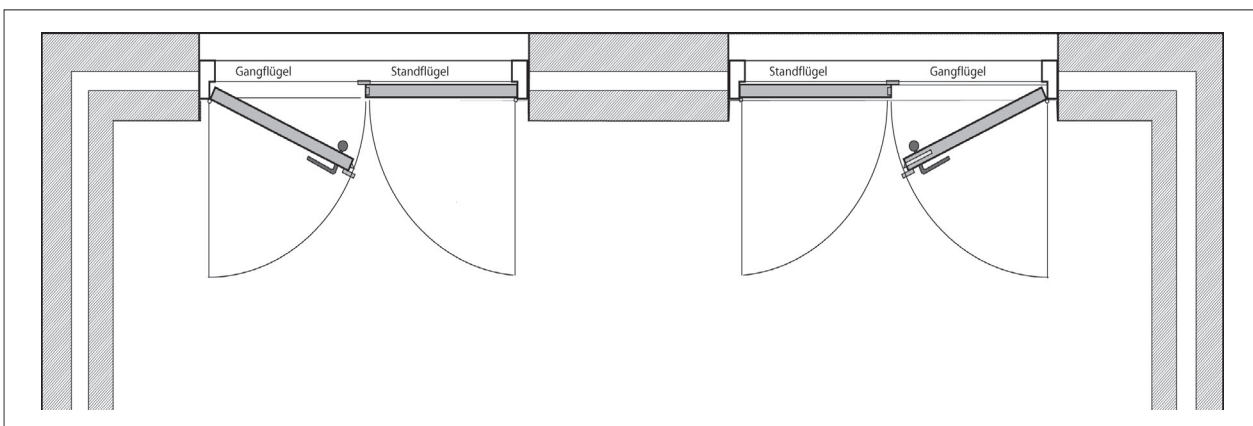


DIN LH

DIN RH

Double-sash doors

The initially opening door sash (active sash) is decisive for the determination of the direction of double-sash doors. Just as with single-sash doors, the door side on which the hinges are visible is what determines the direction designation. The accessory parts of the secondary opening sash (inactive sash) are oriented to the direction of the active sash.



DIN LH

DIN RH



Classification index

Our locks are certified according to EN 12209. In each case, the key code is marked on the first page of the certified products. You can easily find out the corresponding categories and requirements using the table below.

Utilisation category						1
1 =	Great care		Low		Probability of misuse	
2 =	Medium care		Medium			
3 =	Low care		High			
Continuous functional capability						2
A	F				50,000 latch operations; 10,000 deadbolt operations	
B	G	L	R	W	100,000 latch operations; 25,000 deadbolt operations	
C	H	M	S	X	200,000 latch operations; 50,000 deadbolt operations	
0	10	25	50	120	Latch test load in N	
Door weight and closing force						3
1	4	7	up to 100 kg			
2	5	8	up to 200 kg			
3	6	9	Over 200 kg			
50	25	15	Max. closing force in N			
Suitability for use in smoke- and fire-rated doors						4
0 =	No suitability according to EN 1634-1 proven					
1 =	Suitability according to EN 1634-1 proven					5
Personal safety						
0 =	No requirements					6
Corrosion resistance and temperature						
0 =	No requirements					
A =	Low corrosion resistance, no temperature requirement			E =	B + temperature requirement (-20 °C to 80 °C)	
B =	Medium corrosion resistance, no temperature requirement			F =	C + temperature requirement (-20 °C to 80 °C)	
C =	High corrosion resistance, no temperature requirement			G =	D + temperature requirement (-20 °C to 80 °C)	
D =	Very high corrosion resistance, no temperature requirement					7
Burglar resistance and drill resistance						
1 =	Minimum protective effect					
2 =	Low protective effect					
3 =	Medium protective effect					
4 =	High protective effect			5 =	4 + drill protection deadbolt	
6 =	Extremely high protective effect			7 =	6 + drill protection deadbolt	8
Door-related use range						
A =	without restrictions					
B =	Swing doors					
C =	Sliding doors					
D =	Swing doors, additional support required					9
Type of key operation						
O				Not applicable		
A	B	C	for cylinder lock			
D	E	F	Tumbler lock			
G	H		without key activation			
Manual	Automatic	Multi-turn				10
Type of handle operation						
0 =	Without nut					
1 =	Spring in the hardware		Actuating torque of latch	max. 0.5 Nm		
2 =	Restoring torque on the nut	min. 0.6 Nm		max. 3 Nm		
3 =				max. 5 Nm		
4 =				According to manufacturer's specification		
Requirement for key identification						11
0 =	No requirements					
A =	Min. 3 tumblers			Min. 100 lock variants		
B =	Min. 5 tumblers			Min. 1,000 lock variants		
C =				Min. 10,000 lock variants		



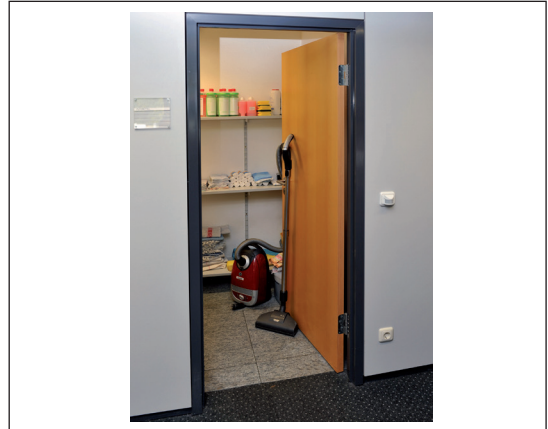
General Information

Requirement classes

Class 1

For doors that are opened only **occasionally** and with care.

e.g. storerooms



Class 2

For doors that are opened **regularly** and with care.

e.g. office doors



Class 3

For doors that are opened **frequently** and in part with a high degree of force.

e.g. doors in public buildings



Class 4

For doors that are opened **very often** and in part roughly.

e.g. doors with increased burglar resistance and doors in public buildings.







Locks for tubular frame doors

Deadbolt projection 15 mm

28

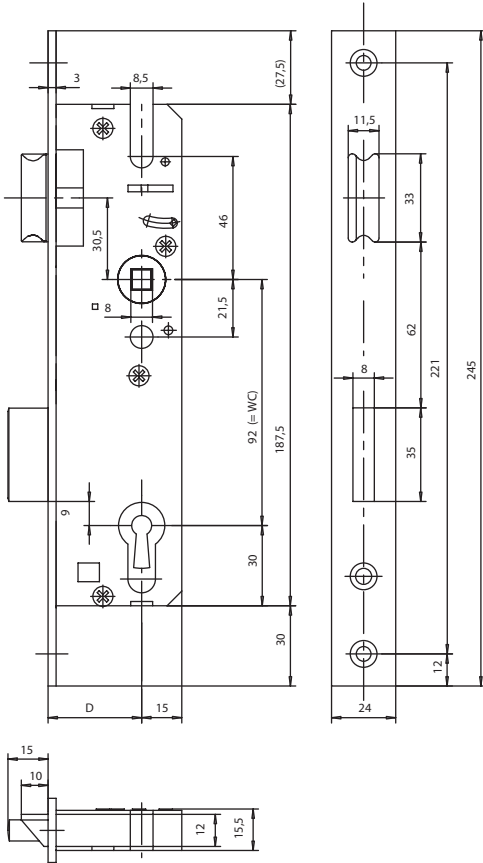
Mortise lock for tubular frame doors
Deadbolt projection 15 mm.



Article	DIN 18251-2	EN 12209
28 PZW	Class 1	2B700C2BC20

Version

Can be used on DIN RH and LH due to reversible latch
Bright zinc-plated latch and deadbolt,
Deadbolt projection 15 mm
zinc-plated lock case.





28 PZW

prepared for profile cylinder, with lever latch, single-turn deadbolt.

Backset	PZ dimension	Spindle square	Secondary sash width	Shield length	Rounded	Angular	Direction	Face plate surface	Striker plate	Version	Material group	Material number
18	92	8	24	245		X	R/L	galvanised	without		99	3193483
18	92	8	24	245		X	R/L	Brushed matt stainless steel	without		99	3112653
20	92	8	24	245		X	R/L	galvanised	without		99	3251078
20	92	8	24	245		X	R/L	Brushed matt stainless steel	without		99	3112664
22	92	8	24	245		X	R/L	galvanised	without		99	3370948
22	92	8	24	245		X	R/L	Brushed matt stainless steel	without		99	3112671
24	92	10	24	245		X	R/L	galvanised	without		93	3445468
24	92	8	24	245		X	R/L	galvanised	without		99	3276810
24	92	8	24	245		X	R/L	galvanised	without	Latch and deadbolt protrude 5 mm	93	3444908
24	92	8	24	245		X	R/L	Brushed matt stainless steel	without		99	3112686
24	92	8	24	245		X	R/L	Brushed matt stainless steel	without	Latch and deadbolt protrude 5 mm	93	3112688
26	92	8	24	245		X	R/L	galvanised	without		99	3441503
26	92	8	24	245		X	R/L	Brushed matt stainless steel	without		99	3112701
30	92	10	24	245		X	R/L	galvanised	without		93	3445017
30	92	8	20	245		X	R/L	Brushed matt stainless steel	without		93	3112708
30	92	8	24	245		X	R/L	galvanised	without		99	3112718
30	92	8	24	245		X	R/L	galvanised	without	Latch and deadbolt protrude 5 mm	93	3444643
30	92	8	24	245		X	R/L	Brushed matt stainless steel	without		99	3112720
30	92	8	24	245		X	R/L	Brushed matt stainless steel	without	Latch and deadbolt protrude 5 mm	93	3112722
35	92	10	24	245		X	R/L	galvanised	without		93	3444906
35	92	8	24	245		X	R/L	galvanised	without		99	3244321
35	92	8	24	245		X	R/L	galvanised	without	Latch and deadbolt protrude 5 mm	93	3241750
35	92	8	24	245		X	R/L	Brushed matt stainless steel	without		99	3112742
35	92	8	24	245		X	R/L	Brushed matt stainless steel	without	Latch and deadbolt protrude 5 mm	93	3112744
40	92	10	24	245		X	R/L	galvanised	without		93	3445467
40	92	8	24	245		X	R/L	galvanised	without		99	3233141
40	92	8	24	245		X	R/L	galvanised	without	Latch and deadbolt protrude 5 mm	93	3444805
40	92	8	24	245		X	R/L	Brushed matt stainless steel	without		99	3112762
40	92	8	24	245		X	R/L	Brushed matt stainless steel	without	Latch and deadbolt protrude 5 mm	93	3112763
45	92	10	24	245		X	R/L	galvanised	without		93	3275490
45	92	8	24	245		X	R/L	galvanised	without		99	3313588
45	92	8	24	245		X	R/L	galvanised	without	Latch and deadbolt protrude 5 mm	93	3447080
45	92	8	24	245		X	R/L	Brushed matt stainless steel	without		99	3112772
45	92	8	24	245		X	R/L	Brushed matt stainless steel	without	Latch and deadbolt protrude 5 mm	93	3112774
50	92	8	24	245		X	R/L	galvanised	without		93	3444748
50	92	8	24	245		X	R/L	Brushed matt stainless steel	without		93	3112781
55	92	8	24	245		X	R/L	galvanised	without		93	3444973
55	92	8	24	245		X	R/L	Brushed matt stainless steel	without		93	3160891



Locks for tubular frame doors

Deadbolt projection 15 mm

Suitable striker plates

Article	Striker plate type				Version				
28	Angle striker plate	Flanged striker	U-profile striker plate	Flat striker	Angular	Rounded	Can be used DIN LH/DIN RH	with compression lobe	with PVC backing
				X	X		X		
				X	X		X		
				X	X		X		



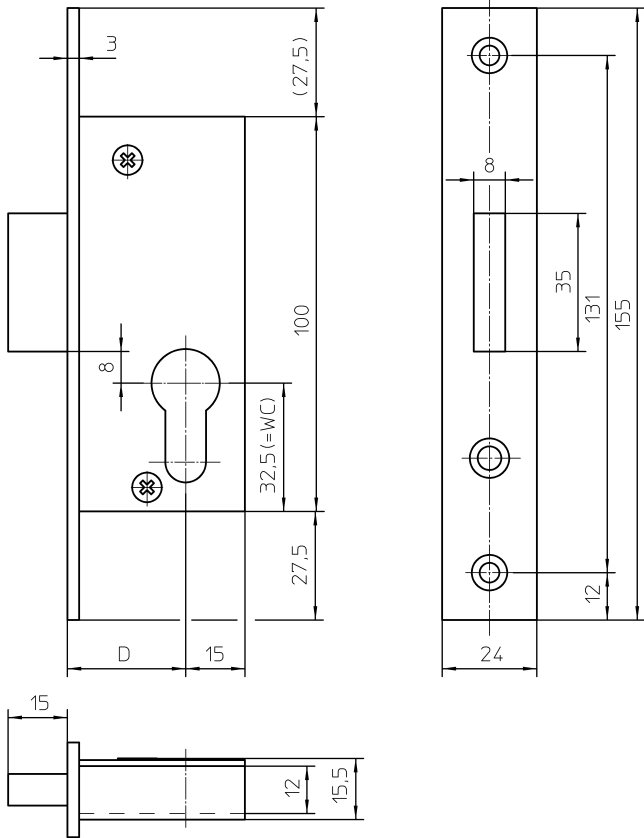
48
Mortise deadbolt lock for tubular frame doors,
Deadbolt projection 15 mm.



Article	DIN 18251-2	EN 12209
48 PZ	-	-

Version

Bright zinc-plated deadbolt,
Deadbolt projection 15 mm
zinc-plated lock case.





Locks for tubular frame doors

Deadbolt projection 15 mm



48 PZ

prepared for profile cylinder, single-turn deadbolt.

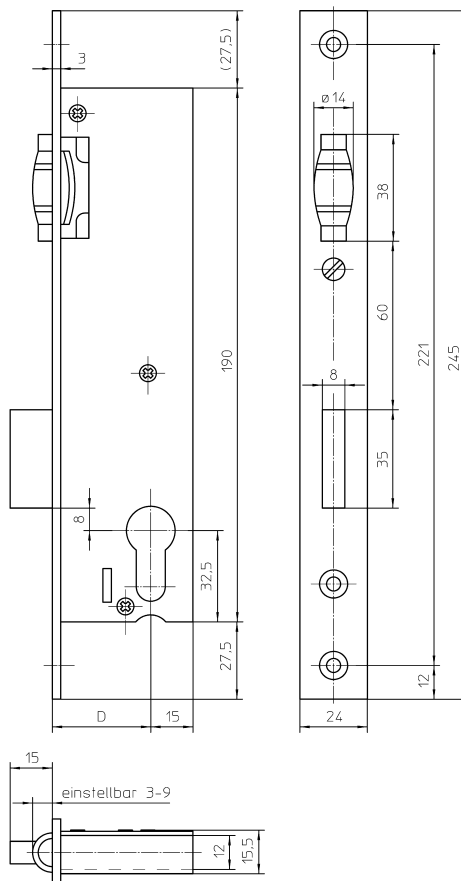
Backset	PZ dimension	Spindle square	Secondary sash width	Shield length	Rounded	Angular	Direction	Face plate surface	Striker plate	Version	Material group	Material number
18	-	-	24	155		X	R/L	galvanised	without		99	3441502
18	-	-	24	155		X	R/L	Brushed matt stainless steel	without		99	3115632
20	-	-	24	155		X	R/L	galvanised	without		99	3298408
20	-	-	24	155		X	R/L	Brushed matt stainless steel	without		99	3115639
22	-	-	24	155		X	R/L	galvanised	without		99	3441454
22	-	-	24	155		X	R/L	Brushed matt stainless steel	without		99	3115643
24	-	-	24	155		X	R/L	galvanised	without		99	3254732
24	-	-	24	155		X	R/L	Brushed matt stainless steel	without		99	3115650
26	-	-	24	155		X	R/L	galvanised	without		93	3443756
30	-	-	24	155		X	R/L	galvanised	without		99	3300736
30	-	-	24	155		X	R/L	Brushed matt stainless steel	without		99	3115661
35	-	-	24	155		X	R/L	galvanised	without		99	3277416
35	-	-	24	155		X	R/L	Brushed matt stainless steel	without		99	3115667
40	-	-	24	155		X	R/L	galvanised	without		99	3441455
40	-	-	24	155		X	R/L	Brushed matt stainless steel	without		99	3115673
45	-	-	24	155		X	R/L	galvanised	without		99	3441456
45	-	-	24	155		X	R/L	Brushed matt stainless steel	without		99	3115681

Suitable striker plates

Article	Striker plate type				Version				
48	Angle striker plate	Flanged striker	U-profile striker plate	Flat striker	Angular	Rounded	Can be used DIN LH/DIN RH	with compression lobe	with PVC backing
130-03-24				X	X		X		
0148-03-24				X	X		X		

Mortise roller bolt lock for tubular frame doors with adjustable swing door roller latch.

Adjustable bright zinc-plated swing door roller latch and deadbolt
Deadbolt projection 15 mm
zinc-plated lock case.





Locks for tubular frame doors

Deadbolt projection 15 mm



88 PZ

prepared for profile cylinder, single-turn deadbolt.

Backset	PZ dimension	Spindle square	Secondary sash width	Shield length	Rounded	Angular	Direction	Face plate surface	Striker plate	Version	Material group	Material number
24	-	-	24	245		X	R/L	galvanised	without		93	3444237
24	-	-	24	245		X	R/L	Brushed matt stainless steel	without		93	3119793
30	-	-	24	245		X	R/L	galvanised	without		93	3377056
30	-	-	24	245		X	R/L	Brushed matt stainless steel	without		93	3119805
35	-	-	24	245		X	R/L	galvanised	without		93	3214277
35	-	-	24	245		X	R/L	Brushed matt stainless steel	without		93	3119811
40	-	-	24	245		X	R/L	galvanised	without		93	3449459
40	-	-	24	245		X	R/L	Brushed matt stainless steel	without		93	3119819
45	-	-	24	245		X	R/L	galvanised	without		93	3446834
45	-	-	24	245		X	R/L	Brushed matt stainless steel	without		93	3119825

Suitable striker plates

Article	Striker plate type				Version				
88	Angle striker plate	Flanged striker	U-profile striker plate	Flat striker	Angular	Rounded	Can be used DIN LH/DIN RH	with compression lobe	with PVC backing
				X	X		X		
				X	X	X	X		
0129-03-24				X	X		X		
188				X	X	X	X		



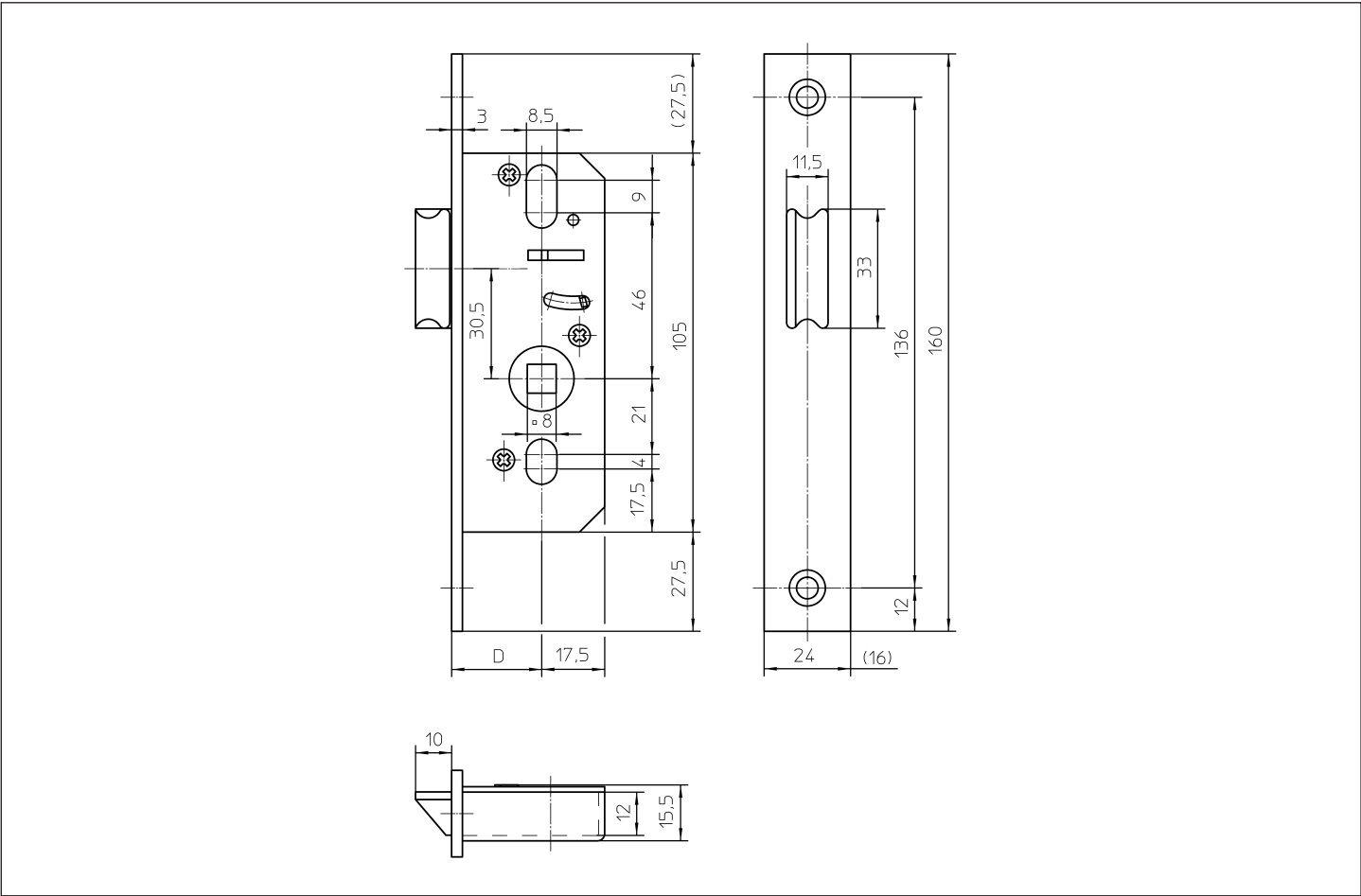
68
Mortise latch lock
for tubular frame doors



Article	DIN 18251-2	EN 12209
68	-	-

Version

Can be used on DIN RH and LH due to reversible latch
Bright nickel-plated latch,
zinc-plated lock case.





Locks for tubular frame doors

without deadbolt

68

Backset	PZ dimension	Spindle square	Secondary sash width	Shield length	Rounded	Angular	Direction	Face plate surface	Striker plate	Version	Material group	Material number
18	-	8	24	160		X	R/L	galvanised	without		99	3329888
18	-	8	24	160		X	R/L	Brushed matt stainless steel	without		93	3118543
20	-	8	24	160		X	R/L	galvanised	without		99	3441473
20	-	8	24	160		X	R/L	Brushed matt stainless steel	without		93	3118554
22	-	8	24	160		X	R/L	galvanised	without		99	3441474
22	-	8	24	160		X	R/L	Brushed matt stainless steel	without		93	3118566
25	-	8	24	160		X	R/L	galvanised	without		99	3348154
25	-	8	24	160		X	R/L	Brushed matt stainless steel	without		93	3142390
30	-	8	24	160		X	R/L	galvanised	without		99	3441475
30	-	8	24	160		X	R/L	Brushed matt stainless steel	without		93	3118600
35	-	8	24	160		X	R/L	galvanised	without		99	3441476
35	-	8	24	160		X	R/L	Brushed matt stainless steel	without		93	3118615
40	-	8	24	160		X	R/L	galvanised	without		99	3441479
40	-	8	24	160		X	R/L	Brushed matt stainless steel	without		93	3118628
45	-	8	24	160		X	R/L	galvanised	without		93	3453856
45	-	8	24	160		X	R/L	Brushed matt stainless steel	without		93	3118639

Suitable striker plates

Article	Striker plate type				Version				
68	Angle striker plate	Flanged striker	U-profile striker plate	Flat striker	Angular	Rounded	Can be used DIN LH/DIN RH	with compression lobe	with PVC backing
130-03-24				X	X		X		
0148-03-24				X	X		X		



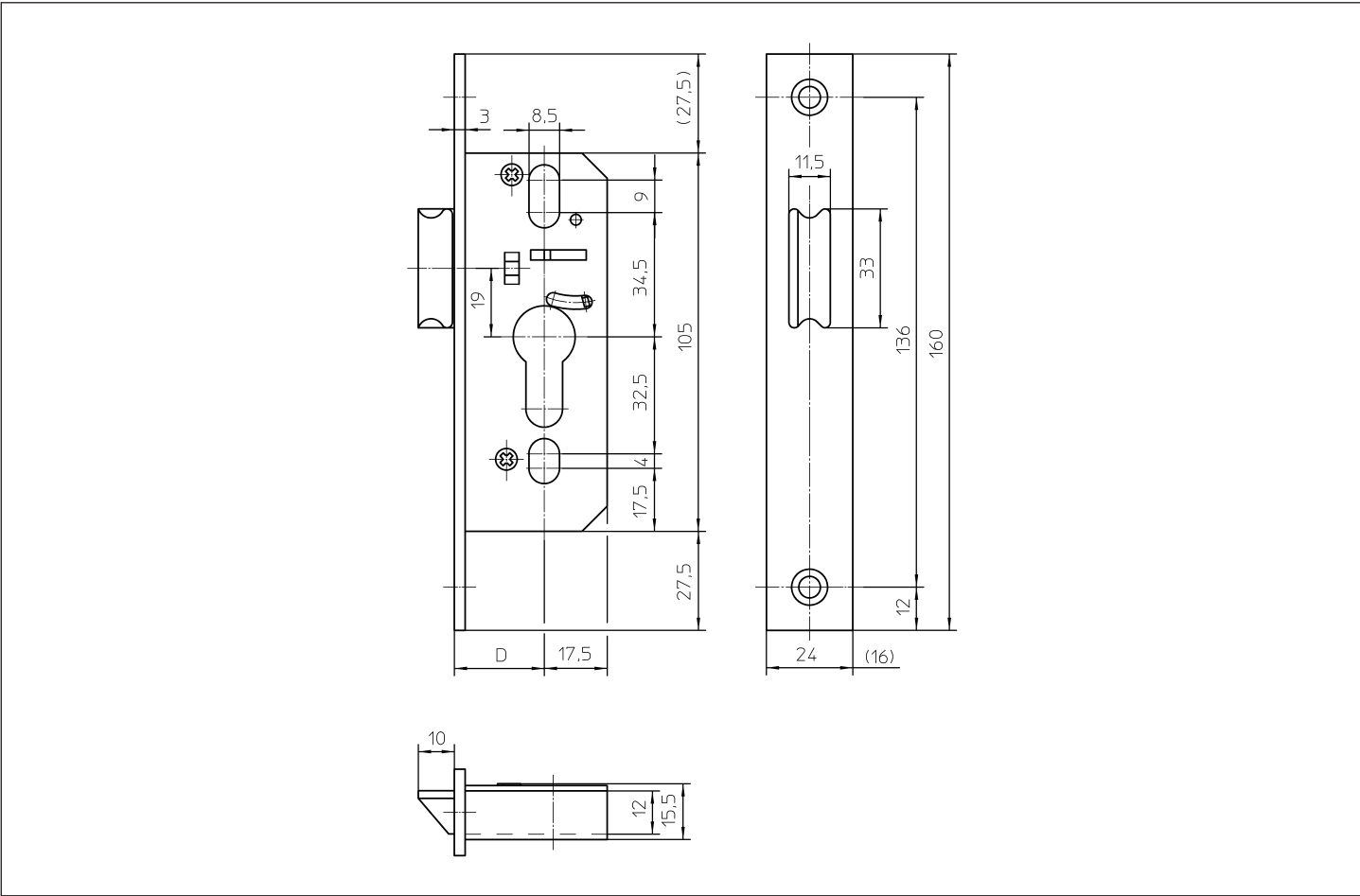
68
Mortise latch lock
for tubular frame doors



Article	DIN 18251-2	EN 12209
68 PZW	-	-

Version

Can be used on DIN RH and LH due to reversible latch
Bright nickel-plated latch,
zinc-plated lock case.





Locks for tubular frame doors

without deadbolt



68 PZW

prepared for profile cylinder, with lever latch.

Backset	PZ dimension	Spindle square	Secondary sash width	Shield length	Rounded	Angular	Direction	Face plate surface	Striker plate	Version	Material group	Material number
25	-	-	24	160		X	R/L	Brushed matt stainless steel	without		93	3273655
30	-	-	24	160		X	R/L	galvanised	without		93	3445951
35	-	-	24	160		X	R/L	galvanised	without		93	3445950
35	-	-	24	160		X	R/L	Brushed matt stainless steel	without		93	3160343

Suitable striker plates

Article	Striker plate type				Version				
68	Angle striker plate								
	Flanged striker								
	U-profile striker plate								
	Flat striker								
	Angular								
	Rounded								
	Can be used DIN LH/DIN RH								
	with compression lobe								
	with PVC backing								
130-03-24				X	X		X		
0148-03-24				X	X		X		

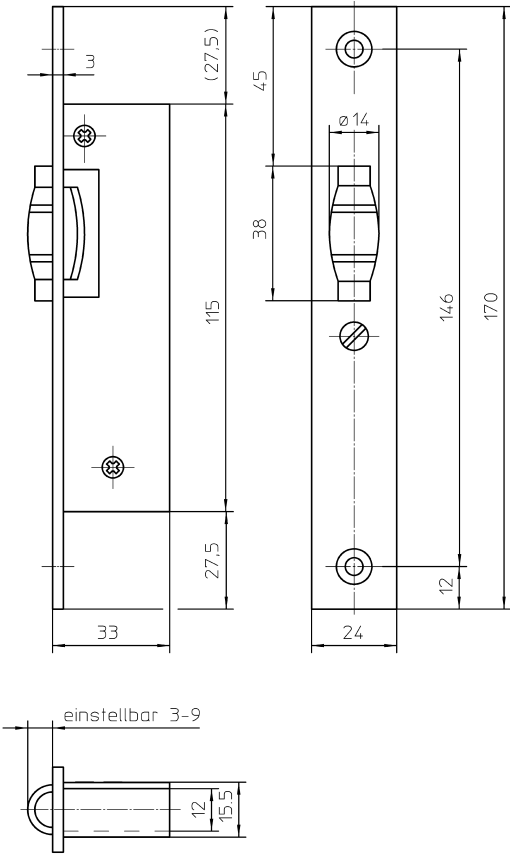


78
Mortise roller latch lock for tubular frame doors with adjustable swing door roller latch.



Article	DIN 18251-2	EN 12209
78	-	-

Version
Adjustable bright zinc-plated swing door roller latch, zinc-plated lock case.





Locks for tubular frame doors without deadbolt

78

Backset	PZ dimension	Spindle square	Secondary sash width	Shield length	Rounded	Angular	Direction	Face plate surface	Striker plate	Version	Material group	Material number
-	-	-	24	170		X	R/L	galvanised	without		99	3441481
-	-	-	24	170		X	R/L	Brushed matt stainless steel	without		99	3119209

Suitable striker plates

Article		Striker plate type				Version				
78		Angle striker plate	Flanged striker	U-profile striker plate	Flat striker	Angular	Rounded	Can be used DIN LH/DIN RH	with compression lobe	with PVC backing
					X	X		X		
					X	X		X		
130-03-24					X	X		X		
0148-03-24					X	X		X		



49
Mortise lock for tubular frame doors
deadbolt projection 20 mm.

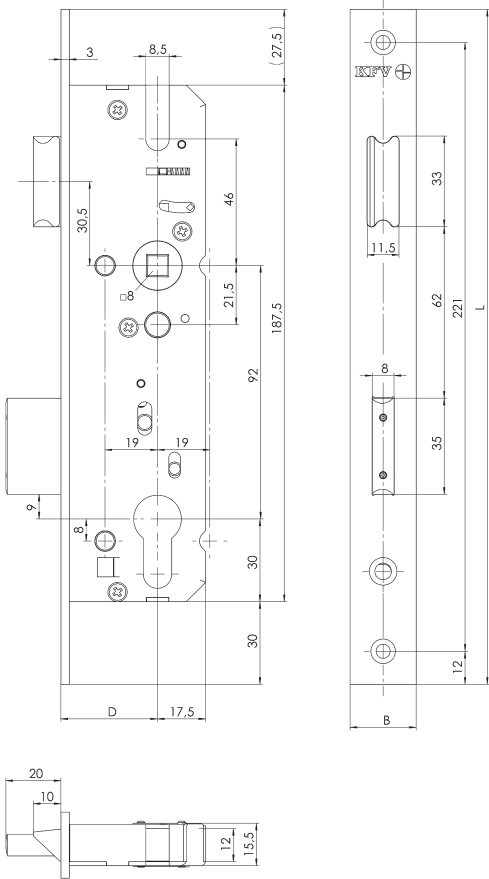


Article	DIN 18251-2	EN 12209
49/49N PZW	Class 3	2S800C4*BC20
49/49N RZW		

* In conjunction with protected striker plate lock case

Version

Can be used on DIN RH and LH due to reversible latch
Bright nickel-plated latch and deadbolt,
Deadbolt secured against sawing through inserted steel pins,
Deadbolt projection 20 mm
zinc-plated lock case.



Drawing shows 49N



Locks for tubular frame doors

Deadbolt projection 20 mm



49 PZW

prepared for profile cylinder, with lever latch, single-turn deadbolt.

Backset	PZ dimension	Spindle square	Secondary sash width	Shield length	Rounded	Angular	Direction	Face plate surface	Striker plate	Version	Material group	Material number
25	92	10	24	245		X	R/L	galvanised	without		93	3446351
25	92	8	24	245		X	R/L	galvanised	without		99	3292771
25	92	8	24	245		X	R/L	galvanised	without	Latch and deadbolt protrude 5 mm	93	3450814
25	92	8	24	245		X	R/L	Brushed matt stainless steel	without		99	3115949



49 RZW

prepared for Swiss round cylinder, with lever latch, single-turn deadbolt.

Backset	PZ dimension	Spindle square	Secondary sash width	Shield length	Rounded	Angular	Direction	Face plate surface	Striker plate	Version	Material group	Material number
25	94	8	24	245		X	R/L	Brushed matt stainless steel	without		93	3132510



49N PZW

prepared for profile cylinder, with lever latch, single-turn deadbolt.

Backset	PZ dimension	Spindle square	Secondary sash width	Shield length	Rounded	Angular	Direction	Face plate surface	Striker plate	Version	Material group	Material number
30	92	10	24	245		X	R/L	galvanised	without		99	3469511
30	92	10	24	280		X	R/L	galvanised	without		93	3474120
30	92	10	24	245		X	R/L	Brushed matt stainless steel	without		93	3474125
30	92	10	24	245		X	R/L	Brushed matt stainless steel	without	U-profile faceplate 6 x 24 x 6 mm	93	3474829
30	92	8	20	245		X	R/L	galvanised	without		93	3474095
30	92	8	24	245		X	R/L	galvanised	without		99	3469510
30	92	8	24	245		X	R/L	galvanised	without	U-profile faceplate 6 x 24 x 6 mm	93	3474890
30	92	8	24	245		X	R/L	Brushed matt stainless steel	without		99	3469504
30	92	8	24	245		X	R/L	Brushed matt stainless steel	without	U-profile faceplate 6 x 24 x 6 mm	93	3474827
35	92	10	24	245		X	R/L	galvanised	without		99	3469515
35	92	10	24	280		X	R/L	galvanised	without		93	3474220
35	92	10	24	245		X	R/L	galvanised	without		93	3474018
35	92	10	24	245		X	R/L	Brushed matt stainless steel	without		93	3474226
35	92	10	24	280		X	R/L	Brushed matt stainless steel	without		93	3474235
35	92	10	24	245		X	R/L	Brushed matt stainless steel	without	U-profile faceplate 6 x 24 x 6 mm	93	3474021
35	92	8	20	245		X	R/L	galvanised	without		93	3474206
35	92	8	24	245		X	R/L	galvanised	without		99	3469514
35	92	8	24	245		X	R/L	galvanised	without	U-profile faceplate 6 x 24 x 6 mm	99	3469528
35	92	8	24	280		X	R/L	galvanised	without	U-profile faceplate 6 x 24 x 6 mm	93	3472165
35	92	8	24	245		X	R/L	galvanised	without	U-profile faceplate 8 x 24 x 8 mm	93	3474882



49N PZW

prepared for profile cylinder, with lever latch, single-turn deadbolt.

Backset	PZ dimension	Spindle square	Secondary sash width	Shield length	Rounded	Angular	Direction	Face plate surface	Striker plate	Version	Material group	Material number
35	92	8	24	245		X	R/L	Brushed matt stainless steel	without		99	3469505
35	92	8	24	280		X	R/L	Brushed matt stainless steel	without		93	3474228
35	92	8	24	245		X	R/L	Brushed matt stainless steel	without	U-profile faceplate 6 x 24 x 6 mm	99	3469529
35	92	8	24	280		X	R/L	Brushed matt stainless steel	without	U-profile faceplate 6 x 24 x 6 mm	93	3474019
35	92	8	24	245		X	R/L	Brushed matt stainless steel	without	U-profile faceplate 8 x 24 x 8 mm	93	3474884
40	92	10	24	245		X	R/L	galvanised	without		99	3469519
40	92	10	24	280		X	R/L	galvanised	without		93	3474512
40	92	10	24	245		X	R/L	Brushed matt stainless steel	without		93	3474610
40	92	8	20	245		X	R/L	galvanised	without		93	3474492
40	92	8	24	245		X	R/L	galvanised	without		99	3469518
40	92	8	24	245		X	R/L	galvanised	without	U-profile faceplate 6 x 24 x 6 mm	93	3471397
40	92	8	24	245		X	R/L	Brushed matt stainless steel	without		99	3469061
40	92	8	24	280		X	R/L	Brushed matt stainless steel	without		93	3474615
40	92	8	24	245		X	R/L	Brushed matt stainless steel	without	U-profile faceplate 6 x 24 x 6 mm	93	3471401
40	92	8	24	280		X	R/L	Brushed matt stainless steel	without	U-profile faceplate 6 x 24 x 6 mm	93	3474888
40	92	8	24	245		X	R/L	Brushed matt stainless steel	without	with latch offset by 2 mm	93	3471584
45	92	10	24	245		X	R/L	galvanised	without		99	3469523
45	92	10	24	280		X	R/L	galvanised	without		93	3474777
45	92	10	24	245		X	R/L	galvanised	without	U-profile faceplate 6 x 24 x 6 mm	93	3474904
45	92	10	24	245		X	R/L	Brushed matt stainless steel	without		93	3474792
45	92	8	20	245		X	R/L	galvanised	without		93	3474813
45	92	8	24	245		X	R/L	galvanised	without		99	3469522
45	92	8	24	245		X	R/L	galvanised	without	U-profile faceplate 6 x 24 x 6 mm	93	3474892
45	92	8	24	280		X	R/L	galvanised	without	U-profile faceplate 6 x 24 x 6 mm	93	3474900
45	92	8	24	280		X	R/L	galvanised	without	with latch offset by 2 mm	93	3471390
45	92	8	24	245		X	R/L	Brushed matt stainless steel	without		99	3469507
45	92	8	24	245		X	R/L	Brushed matt stainless steel	without	U-profile faceplate 6 x 24 x 6 mm	93	3476574
50	92	8	24	245		X	R/L	galvanised	without		93	3474835
55	92	8	20	245		X	R/L	galvanised	without		93	3474820
55	92	8	24	245		X	R/L	galvanised	without		99	3469525
55	92	8	24	245		X	R/L	Brushed matt stainless steel	without		93	3474878
65	92	8	20	245		X	R/L	galvanised	without		93	3474833
65	92	8	24	245		X	R/L	galvanised	without		99	3469547
65	92	8	24	245		X	R/L	Brushed matt stainless steel	without		93	3474880



Locks for tubular frame doors

Deadbolt projection 20 mm



49N RZW

prepared for Swiss round cylinder, with lever latch, single-turn deadbolt.

Backset	PZ dimension	Spindle square	Secondary sash width	Shield length	Rounded	Angular	Direction	Face plate surface	Striker plate	Version	Material group	Material number
30	94	8	24	245		X	R/L	Brushed matt stainless steel	without		93	3127856
35	94	8	24	245		X	R/L	Brushed matt stainless steel	without		93	3142652
40	94	8	24	245		X	R/L	galvanised	without		93	3445811
40	94	8	24	245		X	R/L	Brushed matt stainless steel	without		93	3147096
50	94	8	24	245		X	R/L	Brushed matt stainless steel	without		93	3319742
65	94	8	24	245		X	R/L	Brushed matt stainless steel	without		93	3475733

Suitable striker plates

Article	Striker plate type				Version			
49	Angle striker plate	Flanged striker	U-profile striker plate	Flat striker	Angular	Rounded	Can be used DIN LH/DIN RH	with compression lobe
								with PVC backing
0129-03-24				X	X		X	
8055-06-22-2				X	X		X	

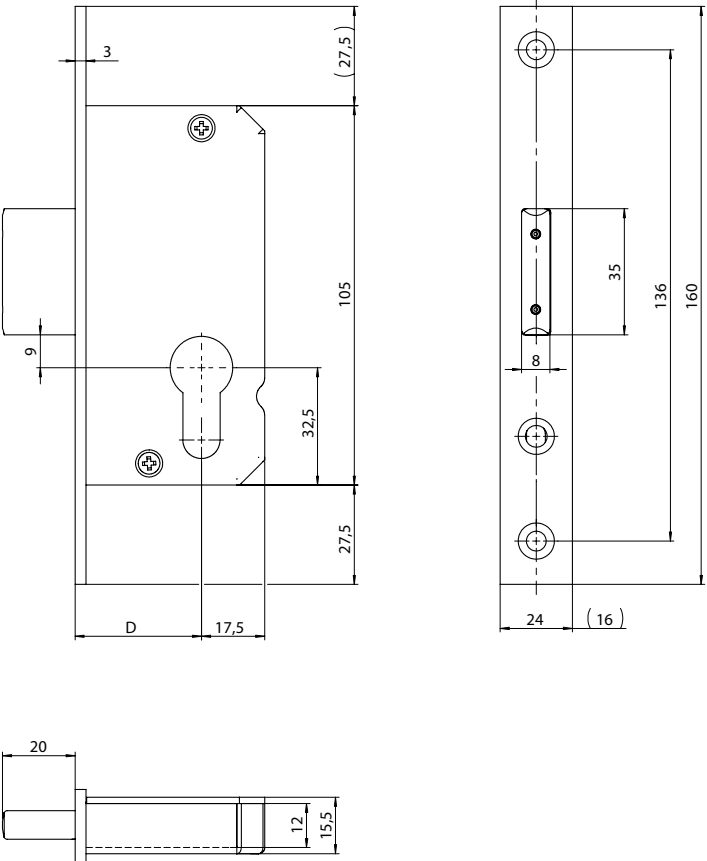


50
Mortise deadbolt lock for tubular frame doors,
Deadbolt projection 20 mm.



Article	DIN 18251-2	EN 12209
50 PZ	-	-

Version
Gloss nickel-plated deadbolt, Deadbolt secured against sawing through inserted steel pins, Deadbolt projection 20 mm zinc-plated lock case.





Locks for tubular frame doors

Deadbolt projection 20 mm



50 PZ

prepared for profile cylinder, single-turn deadbolt.

Backset	PZ dimension	Spindle square	Secondary sash width	Shield length	Rounded	Angular	Direction	Face plate surface	Striker plate	Version	Material group	Material number
25	-	-	24	160		X	R/L	galvanised	without		99	3251202
25	-	-	24	160		X	R/L	Brushed matt stainless steel	without		93	3116233
30	-	-	24	160		X	R/L	galvanised	without		99	3441468
30	-	-	24	160		X	R/L	Brushed matt stainless steel	without		93	3116246
30	-	-	24	160		X	R/L	Brushed matt stainless steel	without	U-profile faceplate 6 x 24 x 6 mm	93	3182099
35	-	-	24	160		X	R/L	galvanised	without		99	3441469
35	-	-	24	160		X	R/L	Brushed matt stainless steel	without		93	3116259
35	-	-	24	160		X	R/L	Brushed matt stainless steel	without	U-profile faceplate 6 x 24 x 6 mm	93	3116312
40	-	-	24	160		X	R/L	galvanised	without		99	3338481
40	-	-	24	160		X	R/L	Brushed matt stainless steel	without		93	3116272
45	-	-	24	160		X	R/L	galvanised	without		99	3201112
45	-	-	24	160		X	R/L	Brushed matt stainless steel	without		93	3116286

Suitable striker plates

Article	Striker plate type				Version				
50	Angle striker plate	Flanged striker	U-profile striker plate	Flat striker	Angular	Rounded	Can be used DIN LH/DIN RH	with compression lobe	with PVC backing
130-03-24				X	X		X		
0148-03-24				X	X		X		



51

Mortise roller bolt lock for tubular frame doors with adjustable swing door roller latch.

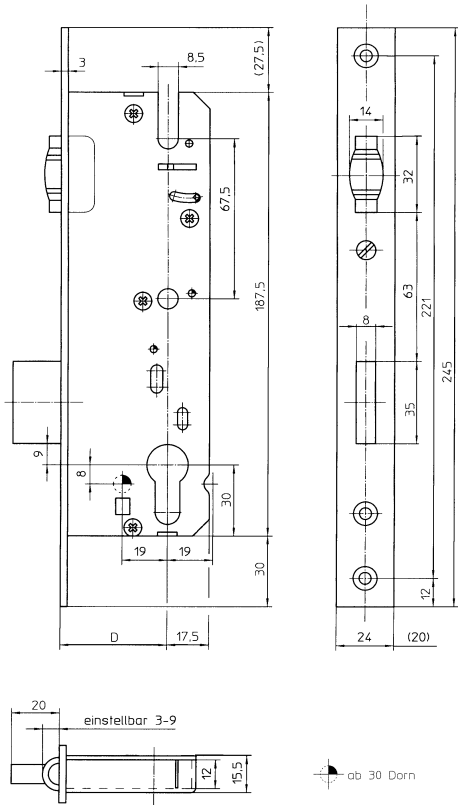


Article	DIN 18251-2	EN 12209
51 PZ	-	-



Version

Adjustable bright zinc-plated swing door roller latch and deadbolt, Deadbolt secured against sawing through inserted steel pins, Deadbolt projection 20 mm zinc-plated lock case.





Locks for tubular frame doors

Deadbolt projection 20 mm



51 PZ

prepared for profile cylinder, single-turn deadbolt.

Backset	PZ dimension	Spindle square	Secondary sash width	Shield length	Rounded	Angular	Direction	Face plate surface	Striker plate	Version	Material group	Material number
25	-	-	24	245		X	R/L	galvanised	without		99	3274459
30	-	-	24	245		X	R/L	galvanised	without		99	3317643
30	-	-	24	245		X	R/L	Brushed matt stainless steel	without		93	3116333
35	-	-	24	245		X	R/L	galvanised	without		99	3246670
35	-	-	24	245		X	R/L	Brushed matt stainless steel	without		93	3116340
35	-	-	24	245		X	R/L	Brushed matt stainless steel	without	U-profile faceplate 6 x 24 x 6 mm	93	3177978
40	-	-	24	245		X	R/L	galvanised	without		99	3469295
40	-	-	24	245		X	R/L	Brushed matt stainless steel	without		93	3116348
45	-	-	24	245		X	R/L	galvanised	without		99	3441471
45	-	-	24	245		X	R/L	galvanised	without	U-profile faceplate 6 x 24 x 6 mm	93	3277033

Suitable striker plates

Article	Striker plate type				Version				
51	Angle striker plate	Flanged striker	U-profile striker plate	Flat striker	Angular	Rounded	Can be used DIN LH/DIN RH	with compression lobe	with PVC backing
				X	X		X		
				X	X	X	X		
0129-03-24				X	X		X		
188				X	X	X	X		



59
Mortise lock for tubular frame doors
deadbolt projection 25 mm.

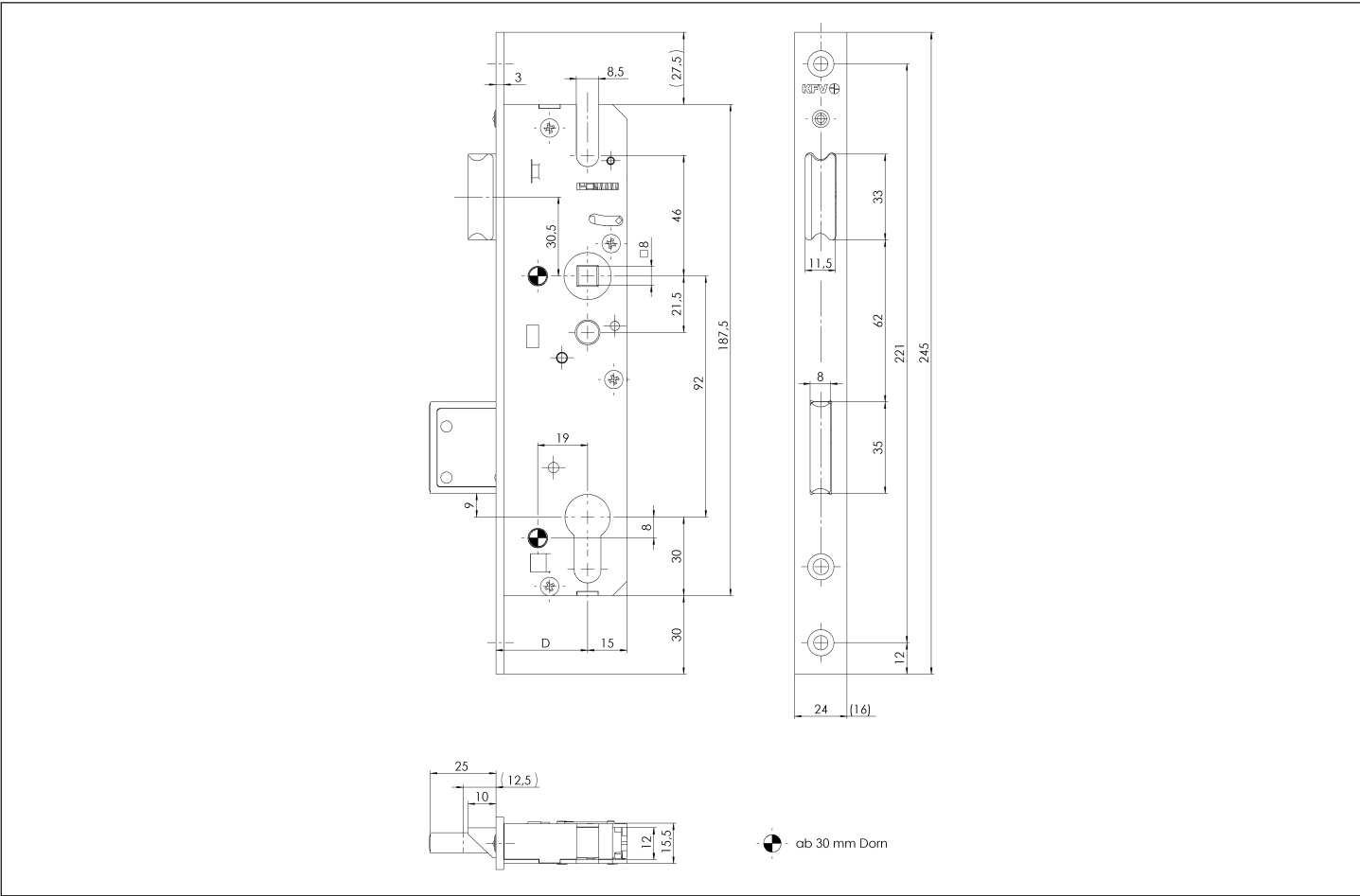


Article	DIN 18251-2	EN 12209
59 PZW	-	2S800C4*BC20
59 RZW	-	-

* In conjunction with protected striker plate lock case

Version

Can be used on DIN RH and LH due to reversible latch,
lubrication device in secondary sash with ball lock,
Bright nickel-plated latch and deadbolt,
Deadbolt secured against sawing through inserted steel pins,
Deadbolt projection 25 mm
zinc-plated lock case.





Locks for tubular frame doors

Deadbolt projection 25 mm



59 PZW

prepared for profile cylinder, with lever latch, double-turn deadbolt.

Backset	PZ dimension	Spindle square	Secondary sash width	Shield length	Rounded	Angular	Direction	Face plate surface	Striker plate	Version	Material group	Material number
30	92	10	24	245		X	R/L	galvanised	without		99	3445534
30	92	10	24	245		X	R/L	galvanised	without	U-profile faceplate 6 x 24 x 6 mm	93	3458793
30	92	10	24	245		X	R/L	Brushed matt stainless steel	without	U-profile faceplate 6 x 24 x 6 mm	99	3445526
30	92	8	24	245		X	R/L	galvanised	without		99	3445533
30	92	8	24	245		X	R/L	Brushed matt stainless steel	without		99	3413178
30	92	8	24	245		X	R/L	Brushed matt stainless steel	without	U-profile faceplate 6 x 24 x 6 mm	99	3445525
35	92	10	24	245		X	R/L	galvanised	without		99	3445536
35	92	10	24	245		X	R/L	galvanised	without	U-profile faceplate 6 x 24 x 6 mm	93	3455372
35	92	10	24	245		X	R/L	Brushed matt stainless steel	without	U-profile faceplate 6 x 24 x 6 mm	99	3445527
35	92	8	24	245		X	R/L	galvanised	without		99	3445535
35	92	8	24	245		X	R/L	galvanised	without	U-profile faceplate 6 x 24 x 6 mm	93	3469449
35	92	8	24	245		X	R/L	Brushed matt stainless steel	without		99	3436541
35	92	8	24	245		X	R/L	Brushed matt stainless steel	without	17.5 mm rear backset	93	3397385
35	92	8	24	245		X	R/L	Brushed matt stainless steel	without	U-profile faceplate 6 x 24 x 6 mm	99	3413177
40	92	10	24	245		X	R/L	Brushed matt stainless steel	without	U-profile faceplate 6 x 24 x 6 mm	99	3445529
40	92	8	24	245		X	R/L	galvanised	without		99	3445537
40	92	8	24	245		X	R/L	Brushed matt stainless steel	without		99	3436658
40	92	8	24	245		X	R/L	Brushed matt stainless steel	without	U-profile faceplate 6 x 24 x 6 mm	99	3445528
45	92	10	24	245		X	R/L	Brushed matt stainless steel	without	U-profile faceplate 6 x 24 x 6 mm	99	3445531
45	92	8	24	245		X	R/L	galvanised	without		99	3445538
45	92	8	24	245		X	R/L	Brushed matt stainless steel	without		99	3443002
45	92	8	24	245		X	R/L	Brushed matt stainless steel	without	U-profile faceplate 6 x 24 x 6 mm	99	3445530
55	92	8	24	245		X	R/L	galvanised	without		99	3445553



59 RZW

prepared for Swiss round cylinder, with lever latch, double-turn deadbolt.

Backset	PZ dimension	Spindle square	Secondary sash width	Shield length	Rounded	Angular	Direction	Face plate surface	Striker plate	Version	Material group	Material number
35	94	8	24	245		X	R/L	Brushed matt stainless steel	without	17.5 mm rear backset	93	3403997
35	94	8	24	245		X	R/L	Brushed matt stainless steel	without	U-profile faceplate 6 x 24 x 6 mm	93	3444469



Suitable striker plates

Article	Striker plate type				Version			
	Angle striker plate	Flanged striker	U-profile striker plate	Flat striker	Angular	Rounded	Can be used DIN LH/DIN RH	with compression lobe with PVC backing
59								
0129-03-24				X	X		X	
8055-06-22-2				X	X		X	



Locks for tubular frame doors

Deadbolt projection 25 mm

60

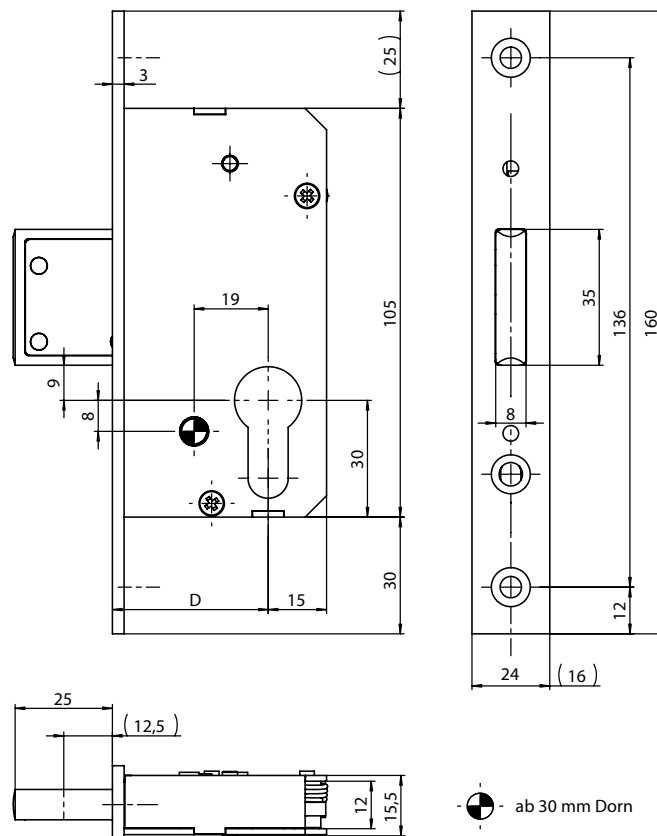
Mortise deadbolt lock for tubular frame doors,
Deadbolt projection 25 mm.



Article	DIN 18251-2	EN 12209
60 PZ	-	-

Version

Gloss nickel-plated deadbolt,
Deadbolt secured against sawing through inserted steel pins,
Deadbolt projection 25 mm
zinc-plated lock case.





60 PZ

prepared for profile cylinder, double-turn deadbolt.

Backset	PZ dimension	Spindle square	Secondary sash width	Shield length	Rounded	Angular	Direction	Face plate surface	Striker plate	Version	Material group	Material number
30	-	-	24	160		X	R/L	galvanised	without		99	3445512
30	-	-	24	160		X	R/L	Brushed matt stainless steel	without		99	3445513
30	-	-	24	160		X	R/L	Brushed matt stainless steel	without	U-profile faceplate 6 x 24 x 6 mm	99	3445521
35	-	-	24	160		X	R/L	galvanised	without		99	3445514
35	-	-	24	160		X	R/L	Brushed matt stainless steel	without		99	3445515
35	-	-	24	160		X	R/L	Brushed matt stainless steel	without	U-profile faceplate 6 x 24 x 6 mm	99	3445522
40	-	-	24	160		X	R/L	galvanised	without		99	3445516
40	-	-	24	160		X	R/L	Brushed matt stainless steel	without		99	3445517
40	-	-	24	160		X	R/L	Brushed matt stainless steel	without	U-profile faceplate 6 x 24 x 6 mm	99	3445523
45	-	-	24	160		X	R/L	galvanised	without		99	3445518
45	-	-	24	160		X	R/L	Brushed matt stainless steel	without		99	3445519
45	-	-	24	160		X	R/L	Brushed matt stainless steel	without	U-profile faceplate 6 x 24 x 6 mm	99	3445524

Suitable striker plates

Article	Striker plate type			Version				
60	Angle striker plate	Flanged striker	U-profile striker plate	Flat striker	Angular	Rounded	Can be used DIN LH/DIN RH	with compression lobe
130-03-24				X	X		X	
0148-03-24				X	X		X	



Locks for tubular frame doors

Deadbolt projection 25 mm

61

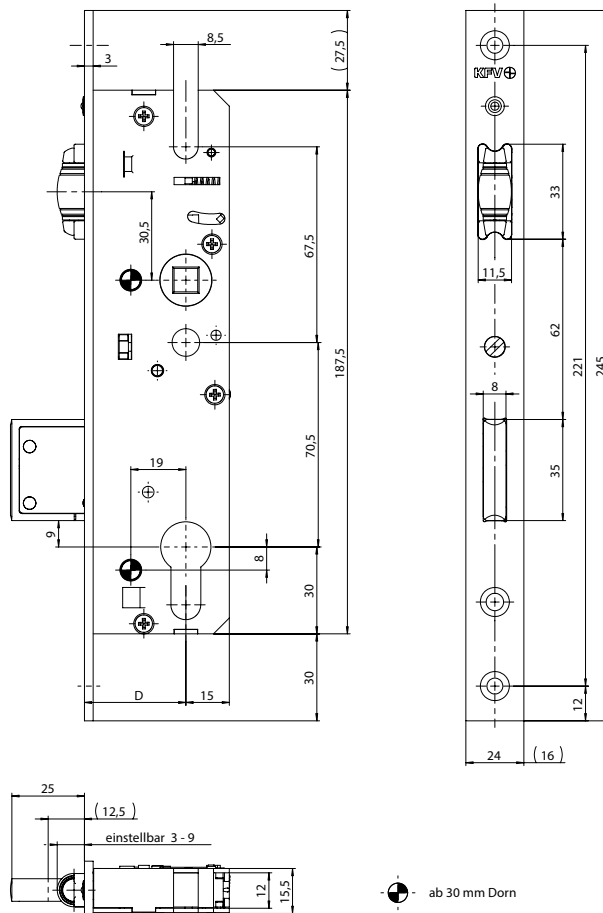
Mortise roller bolt lock for tubular frame doors with adjustable swing door roller latch.



Article	DIN 18251-2	EN 12209
61 PZW	-	-

Version

lubrication device in secondary sash with ball lock,
Adjustable bright zinc-plated swing door roller latch and deadbolt
Deadbolt secured against sawing through inserted steel pins,
Deadbolt projection 25 mm
zinc-plated lock case.





61 PZW

prepared for profile cylinder, double-turn deadbolt.

Backset	PZ dimension	Spindle square	Secondary sash width	Shield length	Rounded	Angular	Direction	Face plate surface	Striker plate	Version	Material group	Material number
30	92	8	24	245		X	R/L	galvanised	without		99	3455350
35	92	8	24	245		X	R/L	galvanised	without		99	3455351
40	92	8	24	245		X	R/L	galvanised	without		99	3455352

Suitable striker plates

Article	Striker plate type				Version				
61	Angle striker plate	Flanged striker	U-profile striker plate	Flat striker	Angular	Rounded	Can be used DIN LH/DIN RH	with compression lobe	with PVC backing
0129-03-24				X	X		X		
188				X	X	X	X		



Locks for tubular frame doors

Swing bolt

35

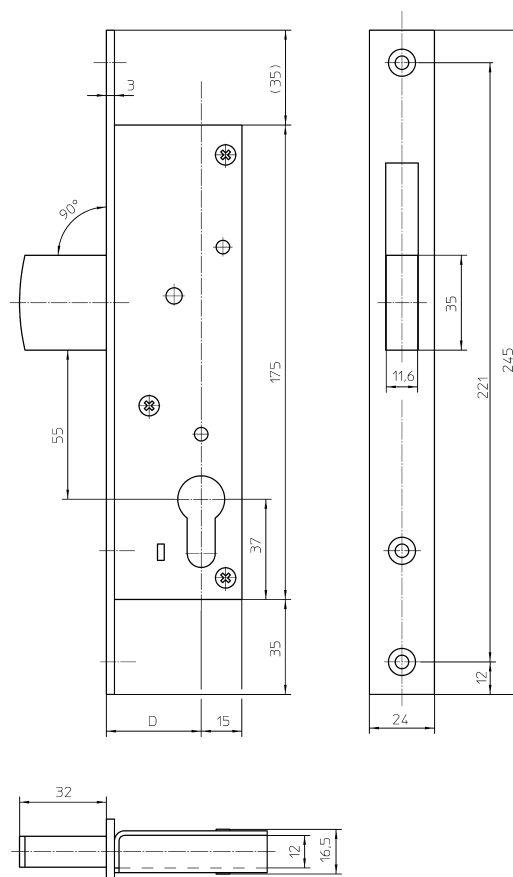
Mortise swing bolt lock
for tubular frame doors



Article	DIN 18251-2	EN 12209
35 PZ	Class 3	-

Version

Bright nickel-plated swing bolt,
Protected against sawing by inserted steel pin,
Deadbolt projection 32 mm
zinc-plated lock case.





35 PZ

prepared for profile cylinder

Backset	PZ dimension	Spindle square	Secondary sash width	Shield length	Rounded	Angular	Direction	Face plate surface	Striker plate	Version	Material group	Material number
30	-	-	24	245		X	R/L	galvanised	without		99	3319108
30	-	-	24	245		X	R/L	Brushed matt stainless steel	without		93	3114036
35	-	-	24	245		X	R/L	galvanised	without		99	3287789
35	-	-	24	245		X	R/L	Brushed matt stainless steel	without		93	3114039
40	-	-	24	245		X	R/L	galvanised	without		99	3441482
40	-	-	24	245		X	R/L	Brushed matt stainless steel	without		93	3114041
45	-	-	24	245		X	R/L	galvanised	without		99	3441483

Suitable striker plates

Article	Striker plate type				Version				
35	Angle striker plate	Flanged striker	U-profile striker plate	Flat striker	Angular	Rounded	Can be used DIN LH/DIN RH	with compression lobe	with PVC backing
35-03-24				X	X		X		



Locks for tubular frame doors

Hook bolt

36

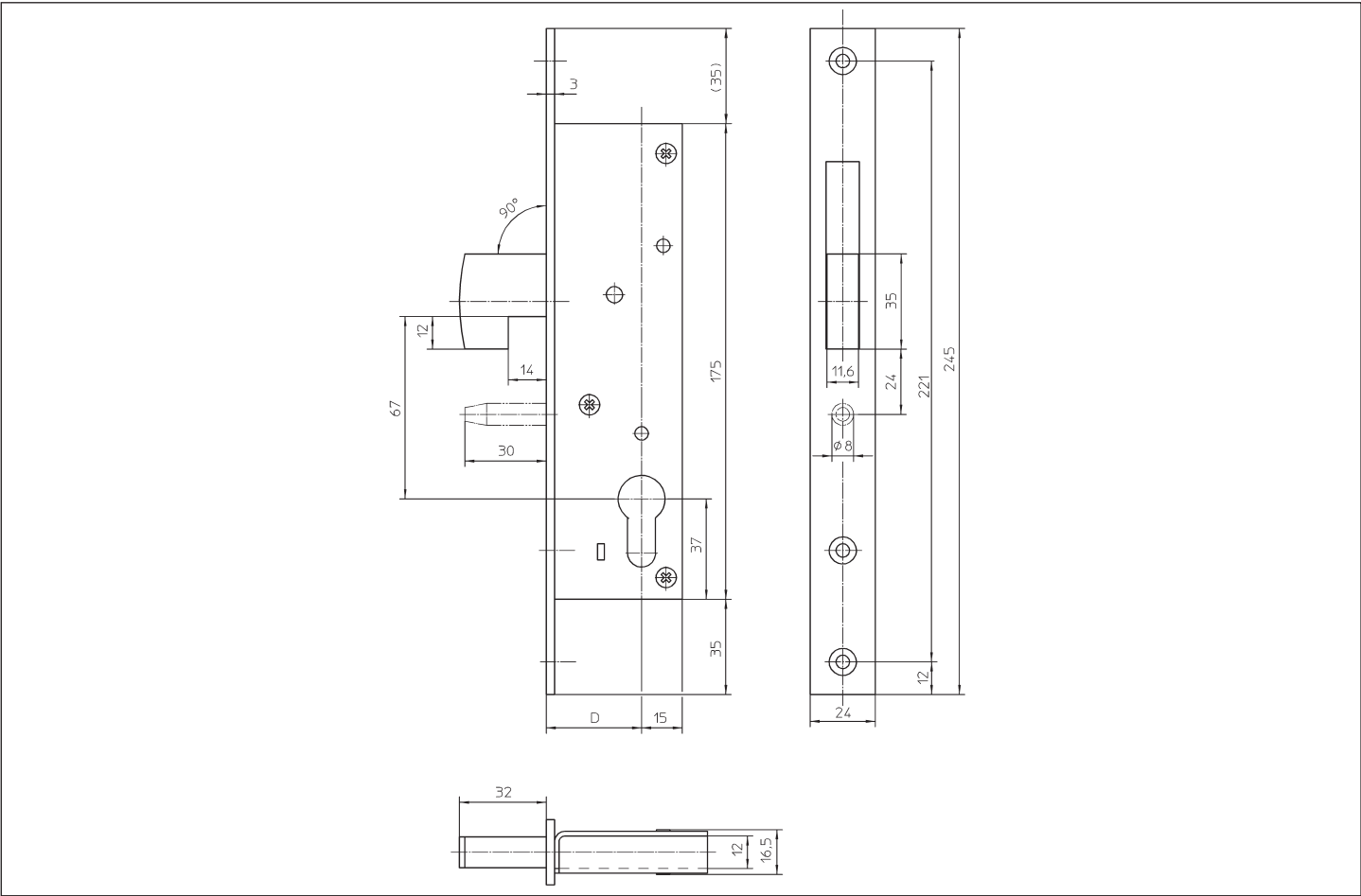
Mortise swing bolt lock
for tubular frame doors



Article	DIN 18251-2	EN 12209
36 PZ	Class 3	-
36 F PZ	Class 3	-
36 F RZ	-	-

Version

Bright nickel-plated hook swing bolt,
Protected against sawing by inserted steel pin,
Hoof bar projection 32 mm,
zinc-plated lock case.





36 PZ

prepared for profile cylinder

Backset	PZ dimension	Spindle square	Secondary sash width	Shield length	Rounded	Angular	Direction	Face plate surface	Striker plate	Version	Material group	Material number
30	-	-	20	245		X	R/L	Brushed matt stainless steel	without		93	3114061
30	-	-	24	245		X	R/L	galvanised	without		99	3264490
30	-	-	24	245		X	R/L	Brushed matt stainless steel	without		99	3114064
35	-	-	20	245		X	R/L	Brushed matt stainless steel	without		93	3114065
35	-	-	24	245		X	R/L	galvanised	without		99	3293905
35	-	-	24	245		X	R/L	Brushed matt stainless steel	without		99	3114067
40	-	-	24	245		X	R/L	galvanised	without		99	3284134
40	-	-	24	245		X	R/L	Brushed matt stainless steel	without		93	3114070
45	-	-	24	245		X	R/L	galvanised	without		99	3441484
45	-	-	24	245		X	R/L	Brushed matt stainless steel	without		93	3114072



36 F PZ

Prepared for profile cylinder, with steel guiding pins.

Backset	PZ dimension	Spindle square	Secondary sash width	Shield length	Rounded	Angular	Direction	Face plate surface	Striker plate	Version	Material group	Material number
30	-	-	20	245		X	R/L	Brushed matt stainless steel	without		93	3114046
30	-	-	24	245		X	R/L	galvanised	without		93	3264491
35	-	-	20	245		X	R/L	Brushed matt stainless steel	without		93	3114050
35	-	-	24	245		X	R/L	Brushed matt stainless steel	without		93	3114052
40	-	-	24	245		X	R/L	galvanised	without		93	3352091
45	-	-	20	245		X	R/L	Brushed matt stainless steel	without		93	3448027



Locks for tubular frame doors

Hook bolt

Suitable striker plates

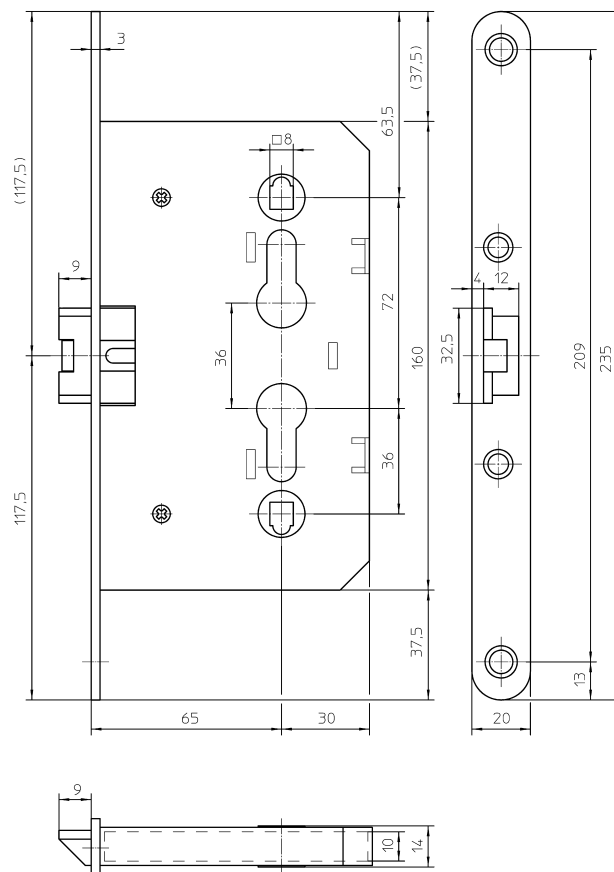
Article	Striker plate type				Version			
	Angle striker plate	Flanged striker	U-profile striker plate	Flat striker	Angular	Rounded	Can be used DIN LH/DIN RH	with compression lobe with PVC backing
36								
36-03-24				X	X		X	

Article	Striker plate type				Version			
	Angle striker plate	Flanged striker	U-profile striker plate	Flat striker	Angular	Rounded	Can be used DIN LH/DIN RH	with compression lobe with PVC backing
36 F								
36-03-24 F				X	X		X	

Mortise lock for steel doors, lightweight version.

Technical drawing of the KFV 1000 lock assembly. The main lock body is a rectangular plate with two large, vertically aligned keyholes. It features two screws on the left side and two screws on the right side. The mounting plate is a vertical strip with four screws, two at the top and two at the bottom. The KFV logo is visible on the bottom right of the main lock body.

Zinc-plated faceplate, lock case, latch and deadbolt, can be used on RH and LH.





Locks for tubular frame doors

Steel doors



183 PZW

prepared for profile cylinder, with lever latch.

Backset	PZ dimension	Spindle square	Secondary sash width	Shield length	Rounded	Angular	Direction	Face plate surface	Striker plate	Version	Material group	Material number
65	72	8	20	235	X		R/L	galvanised	without		98	3231553



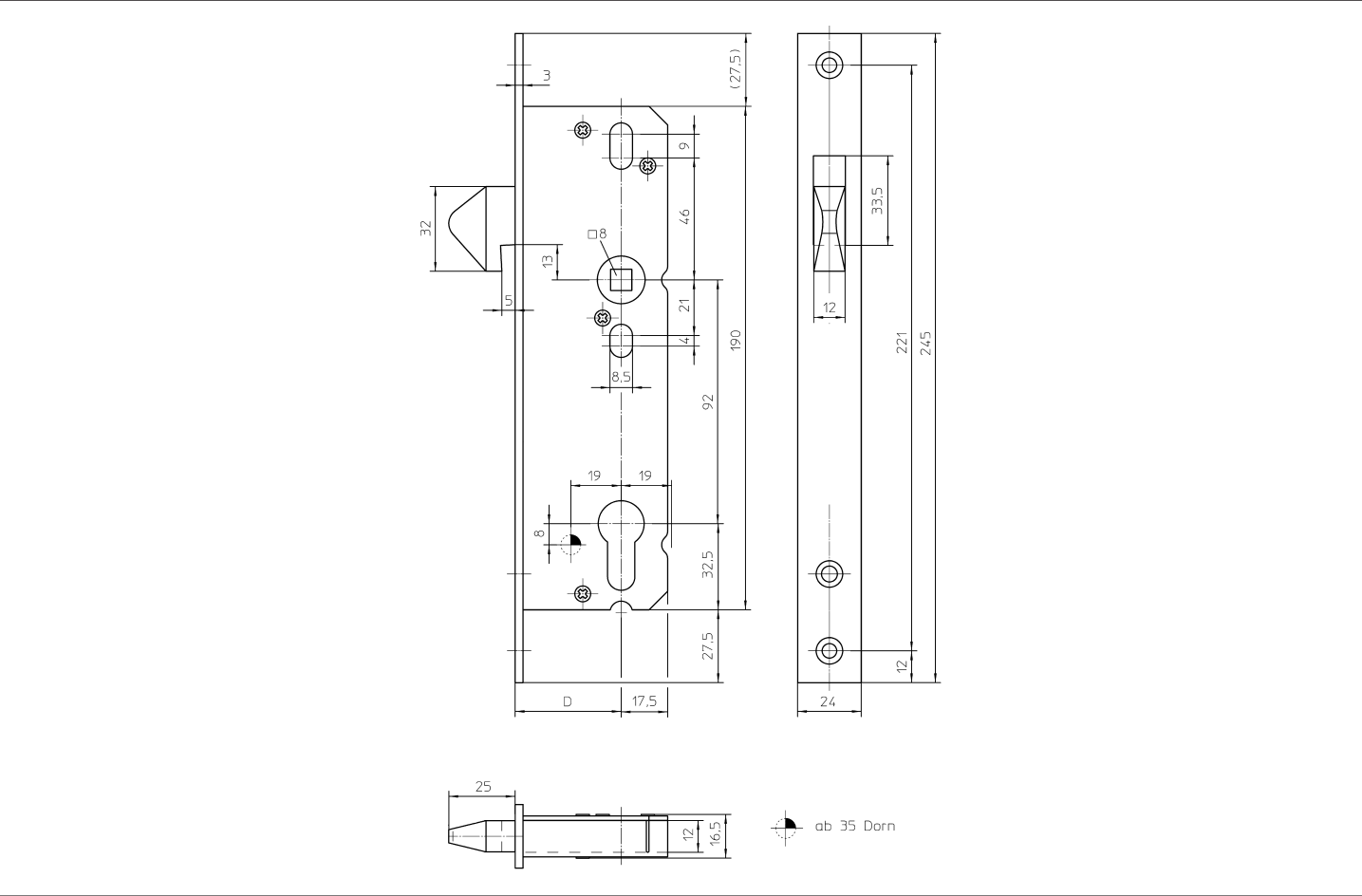
1625

Mortise sliding door lock for tubular frame doors, with lifting, lockable hookbolt.



Article	DIN 18251-2	EN 12209
1625 PZW	-	-
1625 F PZW	-	-

Version
Bright nickel-plated stainless steel hookbolt, zinc-plated lock case.





Locks for tubular frame doors

Hookbolt



1625 PZW

prepared for profile cylinder, with lever latch.

Backset	PZ dimension	Spindle square	Secondary sash width	Shield length	Rounded	Angular	Direction	Face plate surface	Striker plate	Version	Material group	Material number
30	92	8	24	245		X	R/L	galvanised	without		93	3446232
30	92	8	24	245		X	R/L	Brushed matt stainless steel	without		93	3309110
35	92	8	24	245		X	R/L	galvanised	without		99	3336035
35	92	8	24	245		X	R/L	Brushed matt stainless steel	without		93	3309111
40	92	8	24	245		X	R/L	galvanised	without		99	3441485
40	92	8	24	245		X	R/L	Brushed matt stainless steel	without		93	3309113
45	92	8	24	245		X	R/L	galvanised	without		93	3444738
45	92	8	24	245		X	R/L	Brushed matt stainless steel	without		93	3309115



1625 F PZW

prepared for profile cylinder, with steel guiding pins, with latch lever.

Backset	PZ dimension	Spindle square	Secondary sash width	Shield length	Rounded	Angular	Direction	Face plate surface	Striker plate	Version	Material group	Material number
30	92	8	24	245		X	R/L	galvanised	without		93	3450054
35	92	8	24	245		X	R/L	galvanised	without		93	3360946
40	92	8	24	245		X	R/L	galvanised	without		93	3352260

Suitable striker plates

Article	Striker plate type				Version			
1625	Angle striker plate				Angular			
	Flanged striker				Rounded			
	U-profile striker plate				Can be used DIN LH/DIN RH			
	Flat striker				with compression lobe			
					with PVC backing			
0625-92					X	X	X	

Article	Striker plate type				Version			
1625 F	Angle striker plate				Angular			
	Flanged striker				Rounded			
	U-profile striker plate				Can be used DIN LH/DIN RH			
	Flat striker				with compression lobe			
					with PVC backing			
0625-92 F					X	X	X	



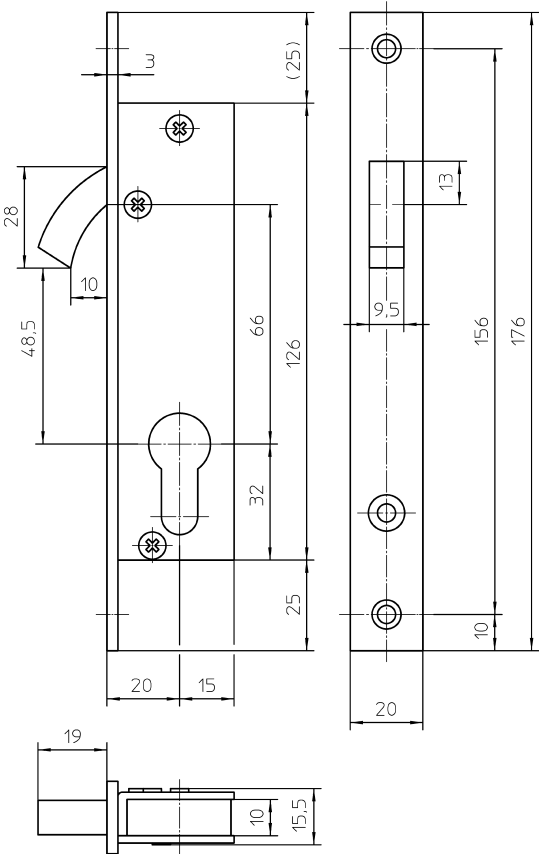
1627

Mortise sliding door lock for tubular frame doors with hookbolt.



Article	DIN 18251-2	EN 12209
1627 PZ	-	-

Version
Bright zinc-plated hook bolt, zinc-plated lock case.





Locks for tubular frame doors

Hookbolt



1627 PZ

prepared for profile cylinder

Backset	PZ dimension	Spindle square	Secondary sash width	Shield length	Rounded	Angular	Direction	Face plate surface	Striker plate	Version	Material group	Material number
20	-	-	20	176		X	R/L	galvanised	without		93	3108545

Suitable striker plates

Article	Striker plate type				Version			
1627	Angle striker plate	Flanged striker	U-profile striker plate	Flat striker	Angular	Rounded	Can be used DIN LH/DIN RH	
							with compression lobe	
							with PVC backing	
				X	X		X	
0627								



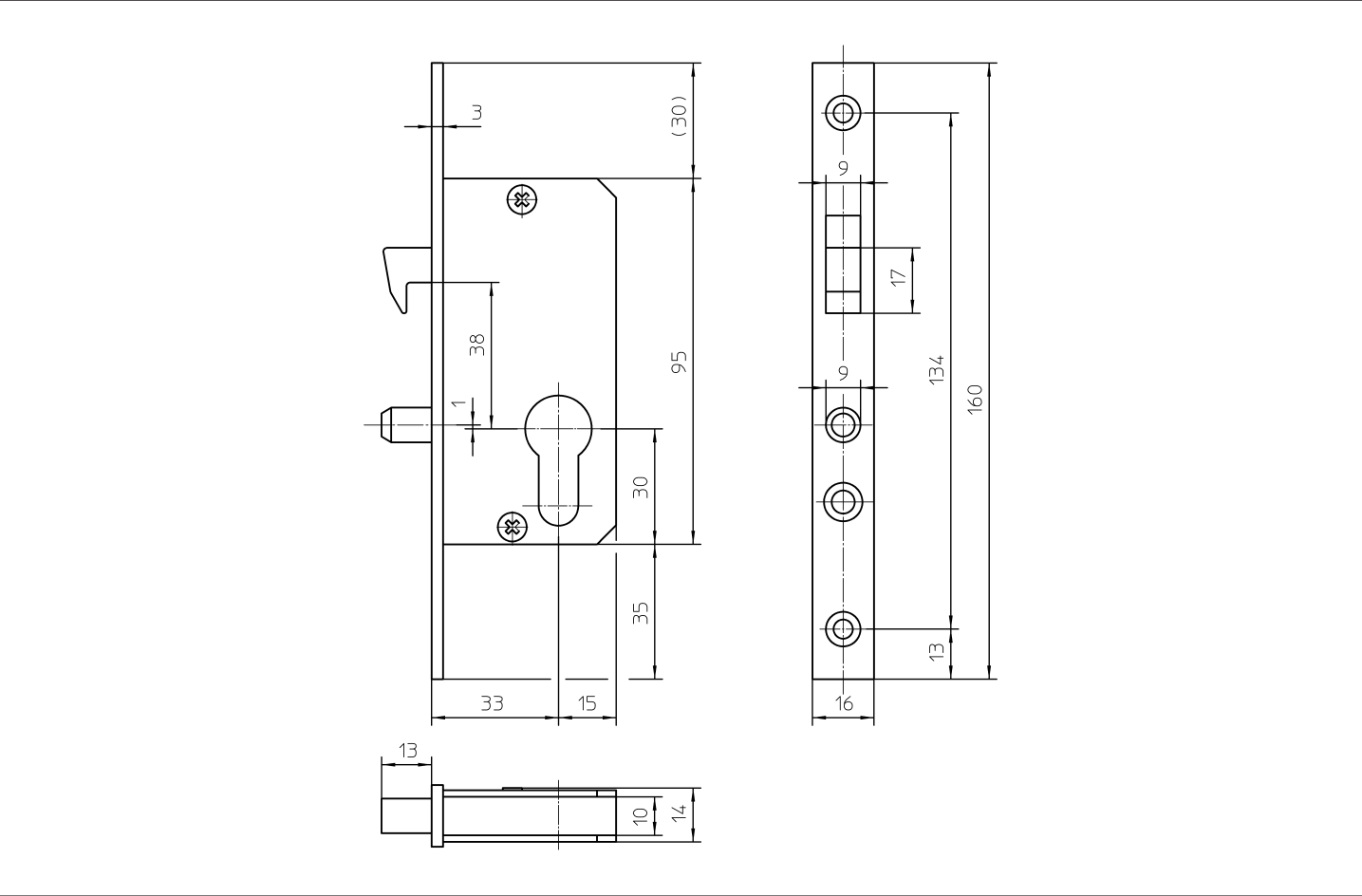
1630

Mortise sliding door lock for tubular frame doors, with lockable hookbolt.



Article	DIN 18251-2	EN 12209
1630 F PZW	-	-

Version
Bright nickel-plated hookbolt, with steel guiding pins.





Locks for tubular frame doors

Hookbolt



1630 F PZW

Prepared for profile cylinder, with steel guiding pins.

Backset	PZ dimension	Spindle square	Secondary sash width	Shield length	Rounded	Angular	Direction	Face plate surface	Striker plate	Version	Material group	Material number
33	-	-	16	160		X	R/L	galvanised	without		93	3160955

Suitable striker plates

Article	Striker plate type				Version			
1630	Angle striker plate	Flanged striker	U-profile striker plate	Flat striker	Angular	Rounded	Can be used DIN LH/DIN RH	
							with compression lobe	
							with PVC backing	
				X	X		X	
0630								





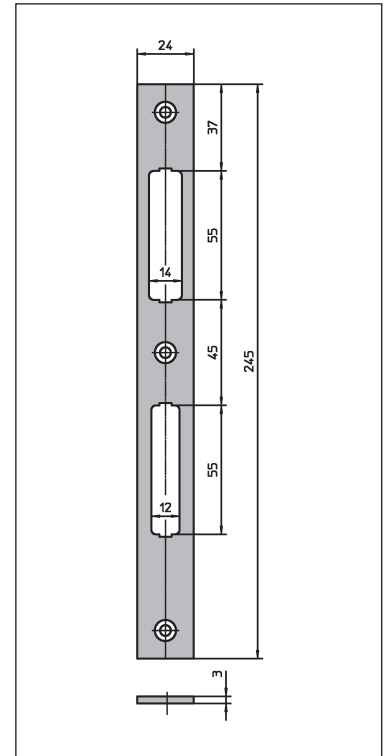
Striker plates

Striker plates for tubular frame locks

0129-03-24

Flat striker

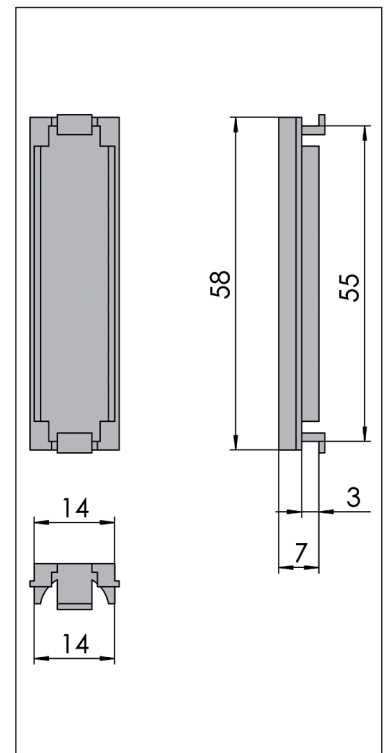
Length	Rounded	Angular	Direction	Surface	Version	Material group	Material number
245		X	R/L	galvanised		99	3100403
245		X	R/L	Brushed matt stainless steel		99	3100404



25-27-3

Swing door roller latch lining

Length	Rounded	Angular	Direction	Surface	Version	Material group	Material number
-			R/L	Black		94	3981691

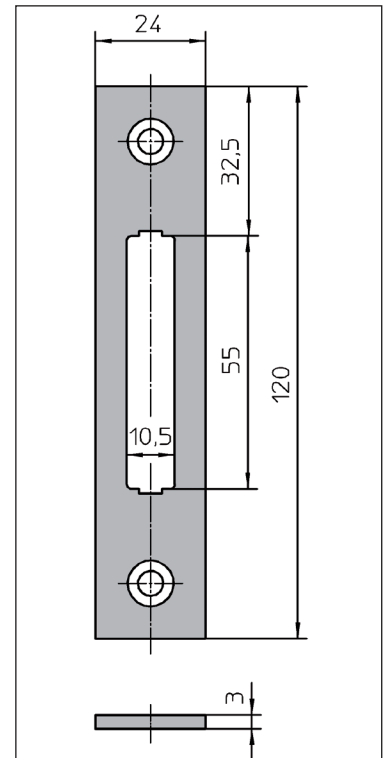




130-03-24

Flat striker

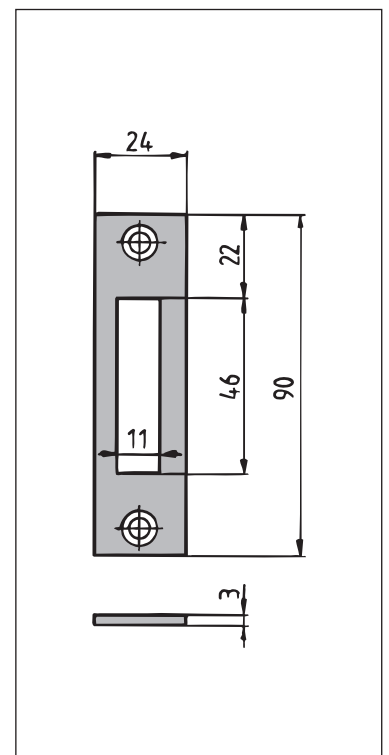
Length	Rounded	Angular	Direction	Surface	Version	Material group	Material number
120		X	R/L	galvanised		99	3319071
120		X	R/L	Brushed matt stainless steel		93	3105422



0148-03-24

Flat striker

Length	Rounded	Angular	Direction	Surface	Version	Material group	Material number
90		X	R/L	galvanised		99	3246530
90		X	R/L	Brushed matt stainless steel		99	3241262





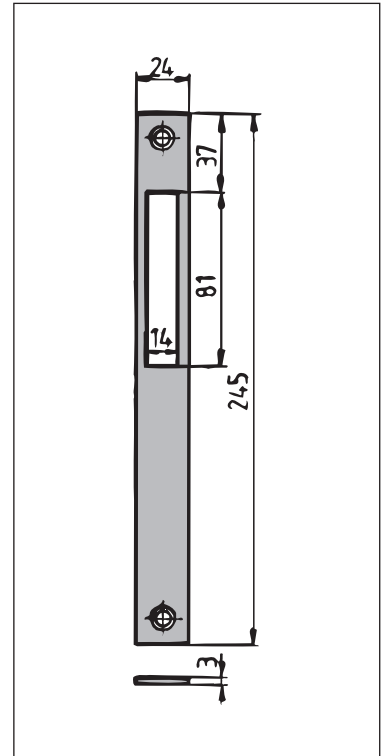
Striker plates

Striker plates for tubular frame locks

35-03-24

Flat striker

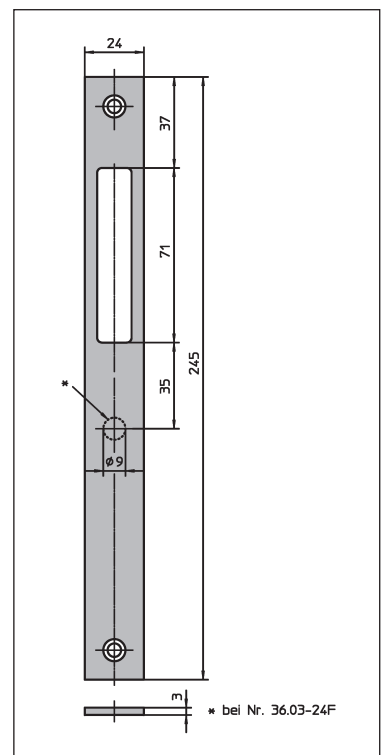
Length	Rounded	Angular	Direction	Surface	Version	Material group	Material number
245		X	R/L	galvanised		99	3114044
245		X	R/L	Brushed matt stainless steel		93	3114045



36-03-24

Flat striker

Length	Rounded	Angular	Direction	Surface	Version	Material group	Material number
245		X	R/L	galvanised		99	3147520
245		X	R/L	Brushed matt stainless steel		99	3137889



36-03-24 F

Flat striker

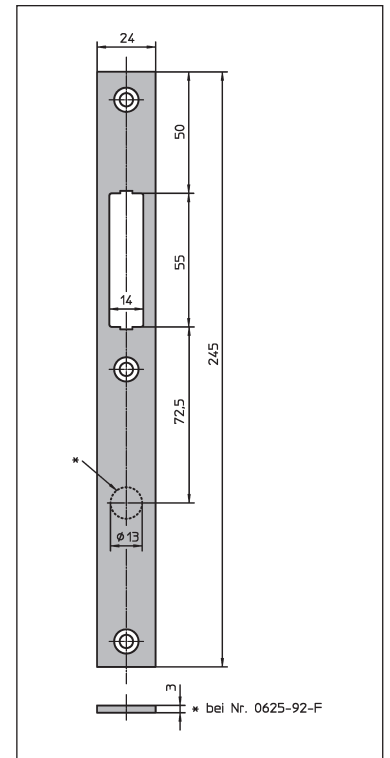
Length	Rounded	Angular	Direction	Surface	Version	Material group	Material number
245		X	R/L	galvanised		93	3231599
245		X	R/L	Brushed matt stainless steel		93	3232161



0625-92

Flat striker

Length	Rounded	Angular	Direction	Surface	Version	Material group	Material number
245		X	R/L	galvanised		93	3297605
245		X	R/L	Brushed matt stainless steel		93	3297606



0625-92 F

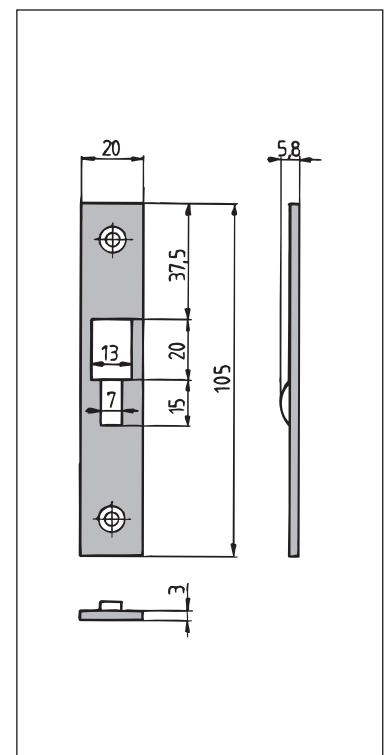
Flat striker

Length	Rounded	Angular	Direction	Surface	Version	Material group	Material number
245		X	R/L	galvanised		93	3483900

0627

Flat striker

Length	Rounded	Angular	Direction	Surface	Version	Material group	Material number
105		X	R/L	galvanised		93	3466889





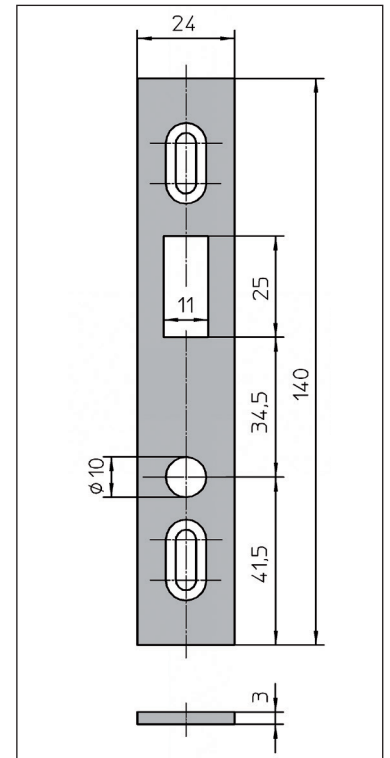
Striker plates

Striker plates for tubular frame locks

0630

Flat striker

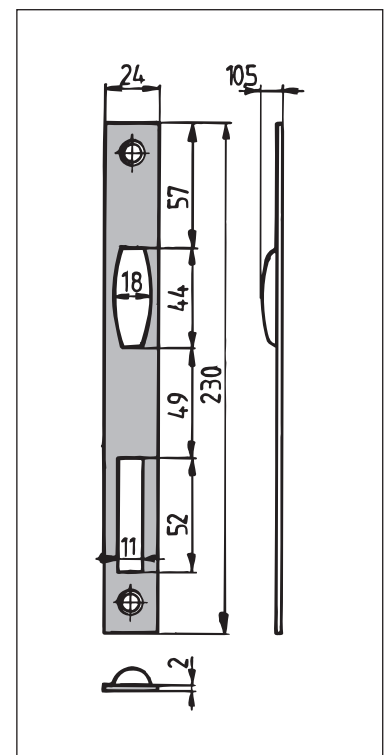
Length	Rounded	Angular	Direction	Surface	Version	Material group	Material number
140		X	R/L	galvanised		93	3271323



188

Flat striker

Length	Rounded	Angular	Direction	Surface	Version	Material group	Material number
230		X	R/L	galvanised		93	3466941
230		X	R/L	Matt brushed stainless steel		93	3258008







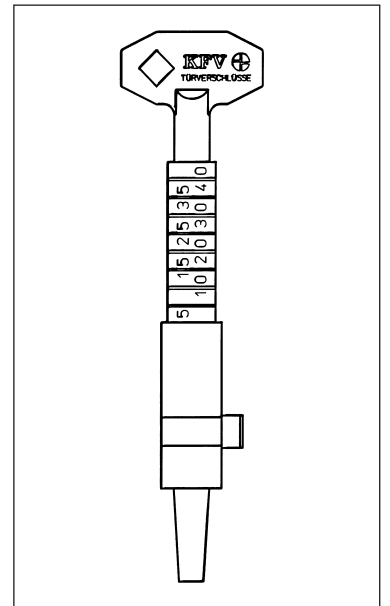
Accessories

Keys

900

Cylinder key gauge made of PVC

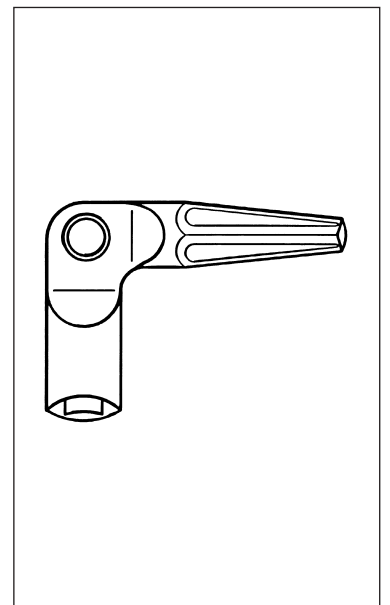
Length	Rounded	Angular	Direction	Surface	Version	Material group	Material number
-	-	-	-	-	900/X	92	3232291



901

Angled new building key
with 8 mm square, nickel-plated.

Length	Rounded	Angular	Direction	Surface	Version	Material group	Material number
-	-	-	-	-		92	3232463

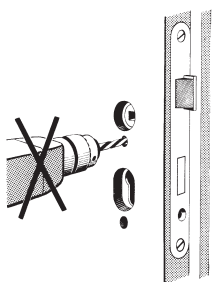




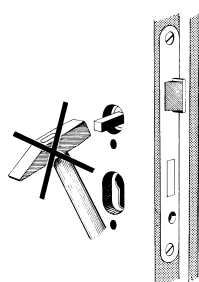


Appendix

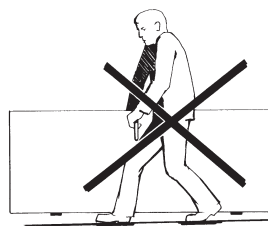
Instructions for use



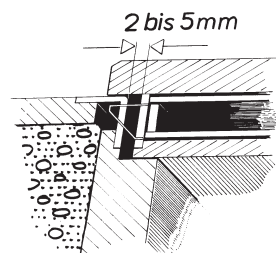
Do not drill through the door leaf in the closing area when the lock is installed.



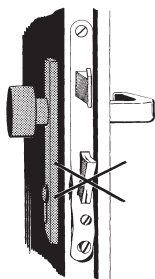
The spindle must not be hit through the lock nut with force.



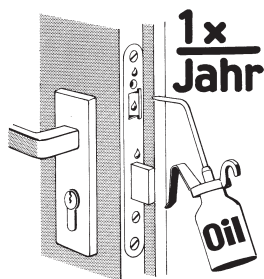
The door leaf must not be carried using the lever handle as a grip.



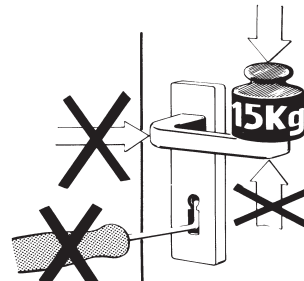
The interval between the lock faceplate and striker plate must be between 2 and 5 mm.



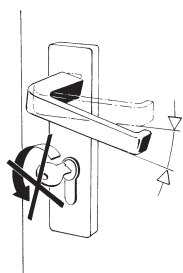
As soon as it becomes apparent that force has been used, the lock must be replaced.



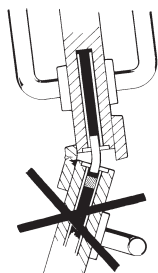
Locks must be lubricated at least once a year (non-resinous oil).



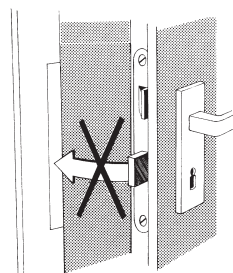
Force must be exerted on the lever handle only in the normal direction of rotation. A maximum force of 150 N may be applied to the lever handle in the direction of actuation. The lock must be locked only with the associated key (and not with foreign objects).



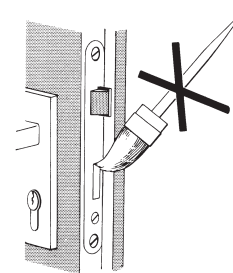
The lever handle and key must not be operated at the same time.



Double-leaf doors must not be forced open using the inactive sash.



The lock must not be locked when the door is open.



The lock deadbolt and latch must not be painted over or coated.

Maintenance instructions

The surfaces of the hardware are not maintenance-free and should be cleaned on a regular basis according to the version.

For **metallic** surfaces (stainless steel, zinc-plated, etc.), use only mild, pH-neutral cleaning agents that have been diluted. Never use aggressive, acidic cleaning or abrasive agents, since these damage the corrosion protection of the hardware.

Coated surfaces should only be cleaned with a solvent-free cleaning agent and a soft, lint-free cloth.



German Product Liability Law

The following information concerning locks must be observed in accordance with the liability of the producer for his products, defined in the "Product Liability Law".

Non-observation thereof shall release us from our liability obligation.

1. Product information and intended use

A lock usually has the task to lock and blockade a vertically installed door. Some simply constructed locks can only be used for locking – also known as closures. Locking is to be understood as keeping the door closed in such a way that it cannot be opened by pulling or pushing, while it can simply be opened by operating a lever handle.

Barring is understood to mean the securing of the closed door by means of an unsprung, rigid deadbolt projecting from the door lock, which engages in the corresponding recess of the frame or in the striker plate opening.

The deadbolt must be detectable in the end position, furthermore, opening the door without the pertinent key must be effectively impeded.

The latch is responsible for locking.

The deadbolt is responsible for the blockading. The deadbolt is pushed by the gear. The locking mechanism (tumbler with anchoring) is responsible for the retaining in a specific position. A door may only be barred if it has already been closed (this also applies to hookbolts).

Cylinder fixing screws must be coordinated with or adapted to the length of the backstop.

A mortise lock is a lock that is inserted in an existing recess (lock pocket) in the door leaf and screwed into place and is used on swing doors as a rule.

To secure the intended use, the right combination with authorised hardware and locking mechanisms (e. g. key, cylinder) as well as accessories (e.g. striker plate) is also decisive for the assembly according to installation instructions or according to coordinated DIN standards including maintenance.

Locks for special function doors must be selected according to the directives and additionally marked if necessary.

In case of panic locks in escape and panic doors, the lever handle must not be activated simultaneously with locking or unlocking function. These locks are designed for the low frequency of activation in emergency situations in the emergency function.

The normal, desired locking (i.e. single-turn or double-turn by tur-

ning the key) or unlocking must not be substituted by continuous activation of the emergency function.

Cylinder locks (Euro profile cylinders) can only be installed in locks without reservation if these cylinder locks are subject to a dimension standards (DIN 18252) and when such locks are explicitly prepared for cylinder locks according to this standard.

Basically, cylinders should be installed in such a way that the lock pin is pointing away from the lock faceplate unless the RH / LH position of the lock pin has no influence on the position of the latch lever in the lock.

In all other cases, the producer, retailer, fabricator or consumer of such locks provide assurance that the cylinder lock he has selected is suitable for installation and for the intended use.

The mandatory legal directives must be adhered to.

Cylinder locks with free-running cam of the catch must not be installed in anti-panic mortise locks. These are, for example, cylinders in which the catch can be freely turned when the key has been withdrawn, or so-called knob cylinders.

General terms, insofar as they are not explained in catalogue sections and figures, are defined in DIN 18250, DIN 18251, DIN 18252 and the hardware industrial standards. Deviations from the standard must be specified in the order.

2. Improper use

Misuse – which is the improper use of products – of locks occurs, for example, if:

- locks are used in doors made of timber, PVC, aluminium or steel and corresponding composite materials that are not vertically installed,
- by the insertion of foreign objects and/or improper objects into the lock or into the striker plate, proper use is obstructed,
- locks are installed in doors that are not permanently installed,
- an intervention or attach has been undertaken on the lock or striker plate that has resulted in a modification of the setup, the mode of operation of the function,
- the activated locking bolt is misused to hold the door open,
- the locking elements are mounted in a way that obstructs function or is subjected to post-treatment, e. g. painting,
- not intended loads, exceeding normal manual force, are applied to the lever handle connection,
- non-associated, e. g. dimensionally deviating or wrongly adjusted locking mechanisms are used,
- a widening or reduction of the required door gap occurs while readjusting the hinges or lowering the door,
- an unauthorised double-sash door is opened over the inactive sash,
- if hands are placed in the rebate between the frame and door leaf when closing doors,



Appendix

Important production information regarding door locks

- simultaneous lever handle and locking mechanism activation occurs.
- fabricators are advised to observe all product information and especially to request operating and service instructions from us and to pass these on to the customer and user.

3. Product performances

If the product performances are not clearly stipulated in our catalogues, brochures, descriptions of performance etc. modifications on individual locks must be coordinated with us.

The directives for this are the industrial standards DIN 18250, DIN 18251, DIN 18252, DIN 18257 and the existing hardware standard.

The basic requirements and the additional requirements that must be met by locks are defined in these standards. The contents of the standard can also be correspondingly applied to other locks.

The durability of locks depends on the frequency of operation, mode of operation, environmental impacts and maintenance.

Replace cylinder locks and keys as soon as there are problems inserting and removing the key despite regular lubrication.

4. Product maintenance

Locks must be lubricated at least once a year with a suitable lubricant and sometimes more frequently, according to the strain. Check and ensure that the cylinder, hardware and striker plate are properly seated in this connection.

Cleaning and care agents used must not contain any corrosive components.

5. Information and instruction obligations

For the fulfilment of the information and instruction obligations in accordance with the Product Liability Act, the following documents and services are available to specialist retailers, locksmith services, architects, planners, fabricators or users on request:

- Catalogues, brochures
- Tender specifications, tender documents, locking plans
- DIN 18250, DIN 18251, DIN 18252, DIN 18257 (exclusive sale by Beuth Verlag GmbH, Berlin),
- Instructions for installation, operation and maintenance,
- advice from us or by our field service.

For the selection of locks as well as advice concerning the installation, operation and maintenance:

- architects and planners are advised to request all necessary product information from us and to observe this information,
- specialist retailers are advised to observe the product information and notes in the price list and especially to request all necessary instructions from us and to pass these on to fabricators,

www.siegenia.com



SIEGENIA®
brings spaces to life